

LEGEND

- PERMIT BOUNDARY
- WASTE BOUNDARY
- PERIMETER DITCH
- PERIMETER ACCESS ROAD
- CLOMR 100-YEAR FLOODPLAIN
- B-124 BORING LOCATION
- B-125/
P-124 BORING/PIEZOMETER LOCATION

NOTES

1. EXISTING CONTOURS DEVELOPED FROM SITE AERIAL TOPOGRAPHIC SURVEY BY DALLAS AERIAL SURVEYS ON FEBRUARY 15, 2010.
2. BOUNDARY AND IMPROVEMENT SURVEY DEVELOPED BY MEJIA ENGINEERING COMPANY ON AUGUST 15, 2011 AND JUNE 9, 2014.
3. FOR CLARITY, NOT ALL SITE FEATURES MAY BE SHOWN.
4. THE NEED FOR FLEXIBILITY TO ACCOMMODATE ADJUSTMENTS AND MODIFICATIONS IS ANTICIPATED CONSIDERING THE SIZE, COMPLEXITY, AND LIFE OF THE PROJECT.

REV. NO.	DATE	DESCRIPTION

CBI CB&I Environmental & Infrastructure, Inc.
TBPE FIRM F-5650

CB&I Environmental and Infrastructure, Inc. has prepared this document for a specific project or purpose. All information contained within this document is copyrighted and remains intellectual property of CB&I Environmental and Infrastructure, Inc. This document may not be used or copied, in part or in whole, for any reason without expressed written consent by CB&I Environmental and Infrastructure, Inc.

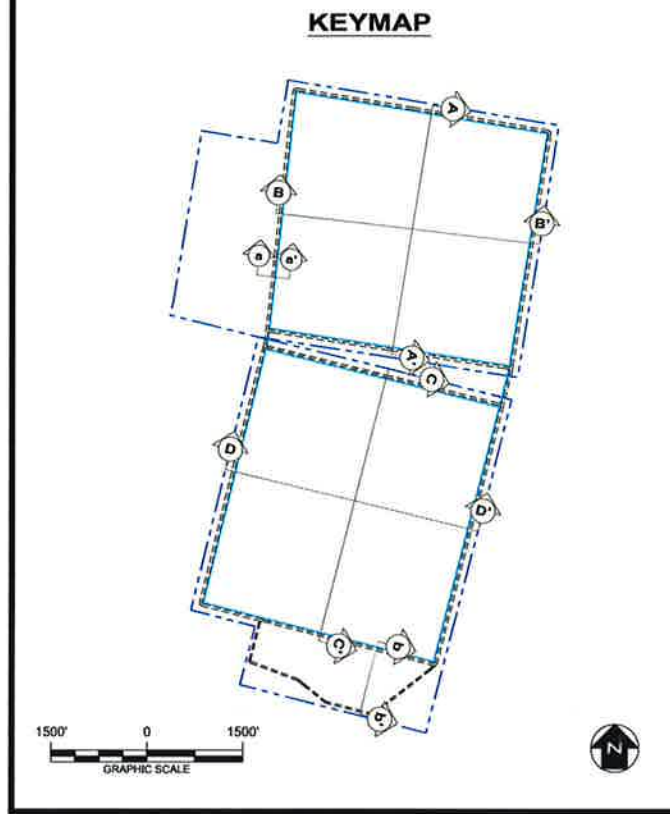
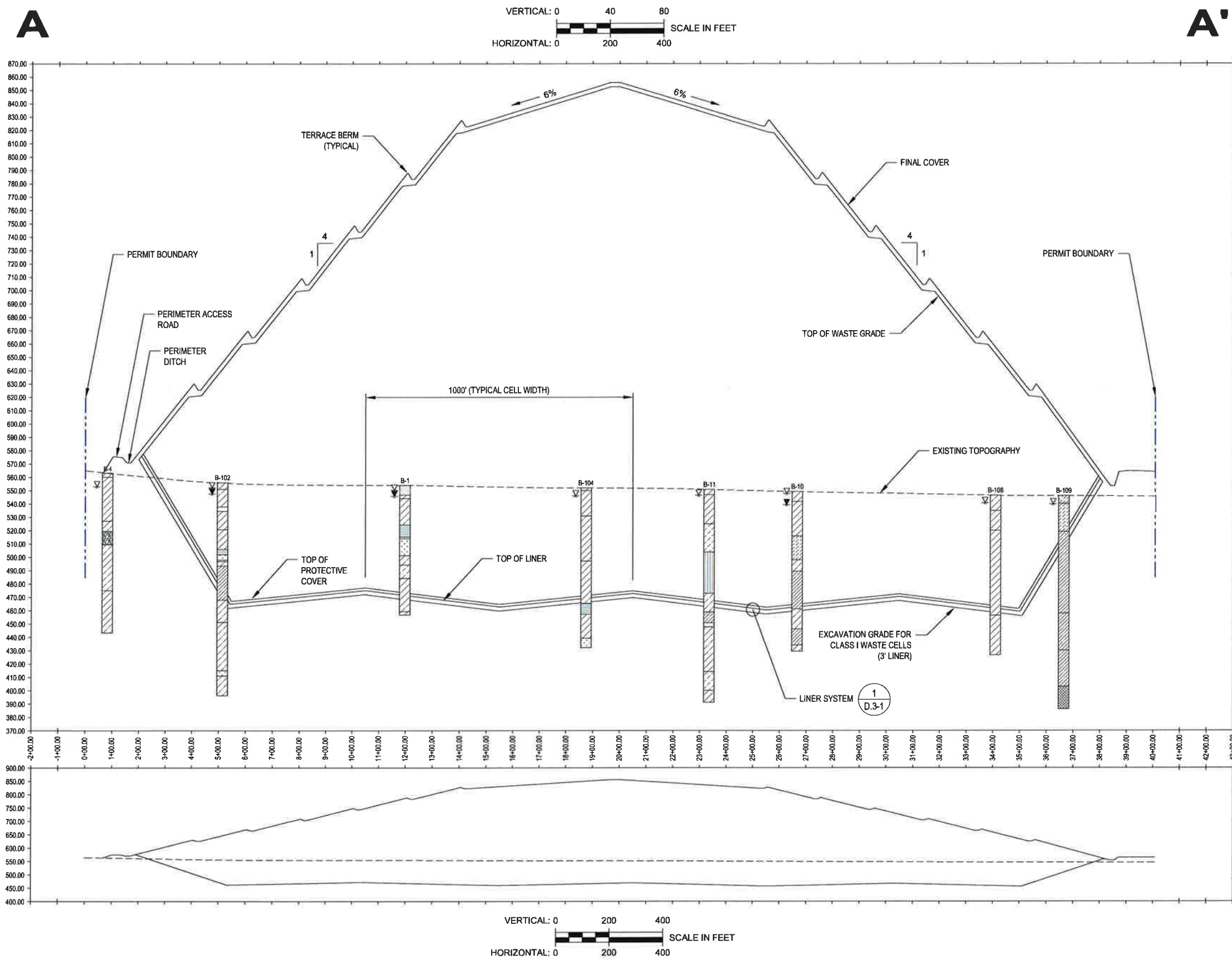


3-2-2015
THIS DOCUMENT IS RELEASED FOR THE PURPOSE OF PERMITTING UNDER THE AUTHORITY OF MICHAEL W. ODEN, P.E. #67185
Michael W. Oden

**PESCADITO ENVIRONMENTAL RESOURCE CENTER
WEBB COUNTY, TEXAS
MSW 2374**

SECTION LAYOUT PLAN

PROJ. NO.: 148866	DATE: MARCH 2015
DESIGNED BY: -	DRAWING NO. III
DRAWN BY: MTE	D.2-1
CHECKED BY: RDS	1 OF 6 SHEETS
APPROVED BY: MWO	



KEYMAP LEGEND

- PERMIT BOUNDARY
- PERIMETER ROAD
- PERIMETER DITCH

LEGEND

- | | |
|-----------------|--------------------------|
| FAT CLAY (CH) | SANDY FAT CLAY (CH) |
| LEAN CLAY (CL) | SANDY LEAN CLAY (CL) |
| SILT (ML) | POORLY GRADED SAND (SP) |
| ELASTIC SILT | SILTSTONE |
| CLAYEY SAND | SANDSTONE |
| SANDY SILT (ML) | CLAYSHALE |
| SILTY SAND (SM) | SANDY SILTY CLAY (CL-ML) |

NOTES

1. REFER TO DRAWING III-D.1-3 FOR EXCAVATION PLAN. REFER TO DRAWING III-D.1-4 FOR LANDFILL COMPLETION PLAN.
2. REFER TO PART III, ATTACHMENT D.3 FOR LINER, LEACHATE COLLECTION SYSTEM, AND FINAL COVER DETAILS.
3. REFER TO DRAWING III-D.1-1 FOR BUFFER DISTANCES.
4. REFER TO PART III, ATTACHMENT III-E FOR SUBSURFACE CHARACTERIZATION AND GROUNDWATER ELEVATIONS
5. MAXIMUM NORTH UNIT FINAL COVER ELEVATION: 858 FT-MSL. MAXIMUM NORTH UNIT ELEVATION OF WASTE: 855 FT-MSL. DEEPEST EXCAVATION OF NORTH UNIT AT LEACHATE SUMP N-8: 444.7 FT-MSL FOR 3-FT LINER THICKNESS.
6. SOME BORINGS ARE PROJECTED ON THE CROSS SECTIONS FROM THEIR ACTUAL LOCATIONS.

REV. NO.	DATE	DESCRIPTION

CBI CB&I Environmental & Infrastructure, Inc.
 TBPE FIRM F-5650

3-2-2015
 THIS DOCUMENT IS RELEASED FOR THE PURPOSE OF PERMITTING UNDER THE AUTHORITY OF MICHAEL W. ODEN, P.E. 67165.

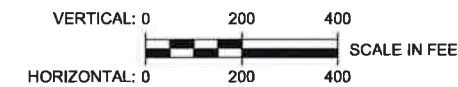
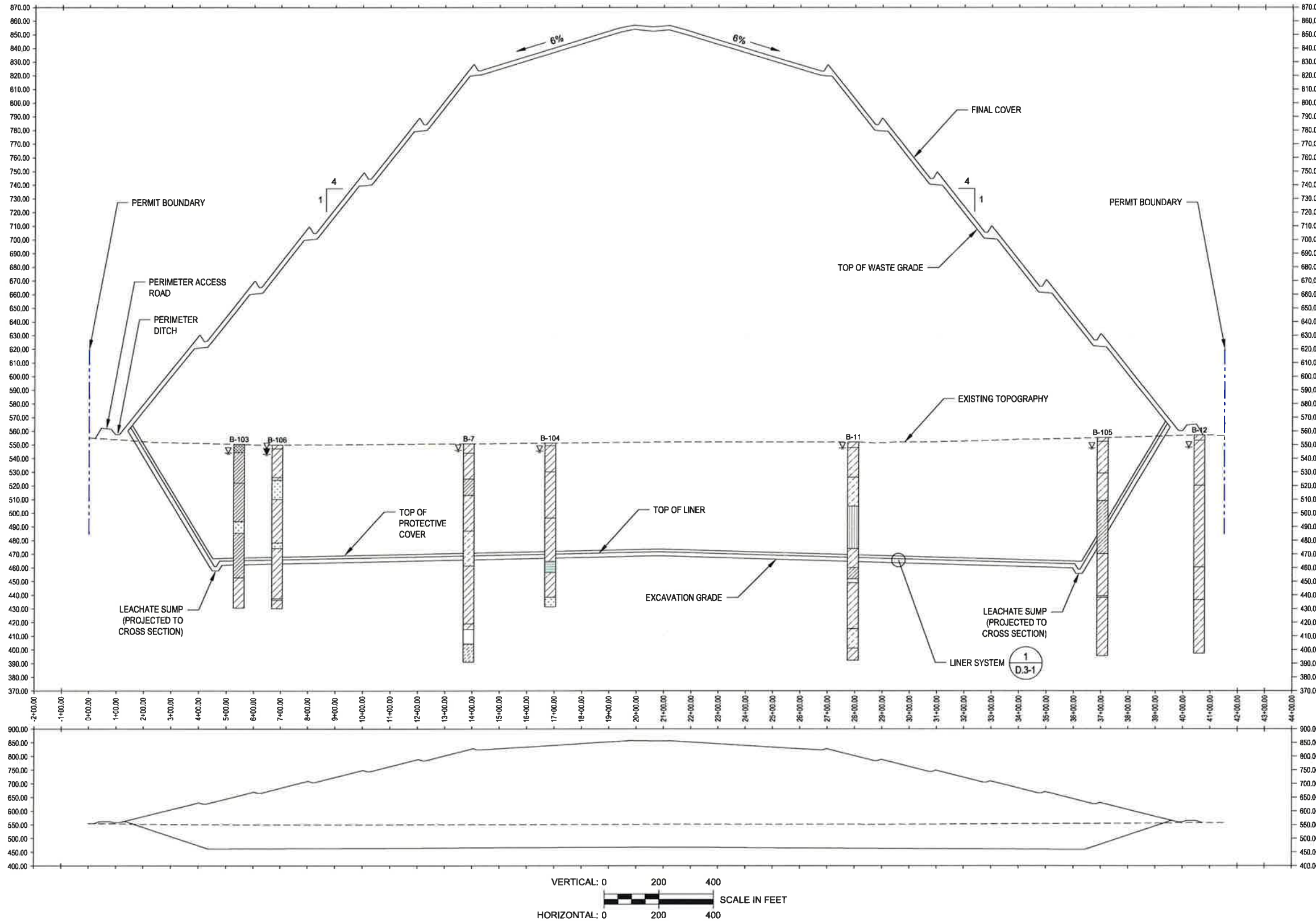
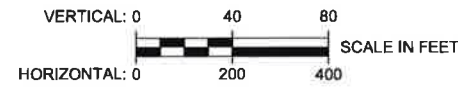
PESCADITO ENVIRONMENTAL RESOURCE CENTER
WEBB COUNTY, TEXAS
MSW 2374

NORTH UNIT
LANDFILL SECTION A - A'

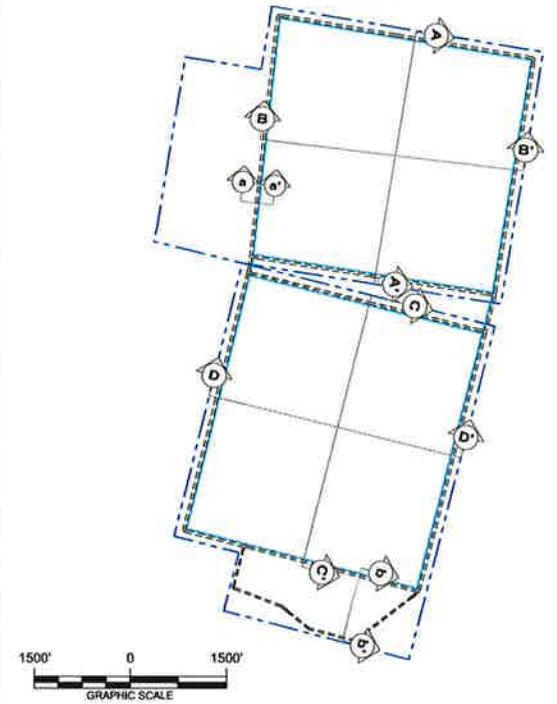
PROJ. NO.:	148866	DATE:	MARCH 2015
DESIGNED BY:	-	DRAWING NO.:	III D.2-2
DRAWN BY:	MTE		
CHECKED BY:	RDS		
APPROVED BY:	MWO		

B

B'



KEYMAP



KEYMAP LEGEND

- PERMIT BOUNDARY
- PERIMETER ROAD
- PERIMETER DITCH

LEGEND

- FAT CLAY (CH)
- LEAN CLAY (CL)
- SILT (ML)
- ELASTIC SILT
- CLAYEY SAND
- SANDY SILT (ML)
- SILTY SAND (SM)
- SANDY FAT CLAY (CH)
- SANDY LEAN CLAY (CL)
- POORLY GRADED SAND (SP)
- SILTSTONE
- SANDSTONE
- CLAYSHALE
- SANDY SILTY CLAY (CL-ML)

NOTES

- REFER TO DRAWING III-D.1-3 FOR EXCAVATION PLAN. REFER TO DRAWING III-D.1-4 FOR LANDFILL COMPLETION PLAN.
- REFER TO PART III, ATTACHMENT D.3 FOR LINER, LEACHATE COLLECTION SYSTEM, AND FINAL COVER DETAILS.
- REFER TO DRAWING III-D.1-1 FOR BUFFER DISTANCES.
- REFER TO PART III, ATTACHMENT III-E FOR SUBSURFACE CHARACTERIZATION AND GROUNDWATER ELEVATIONS
- MAXIMUM NORTH UNIT FINAL COVER ELEVATION: 858 FT-MSL. MAXIMUM NORTH UNIT ELEVATION OF WASTE: 855 FT-MSL. DEEPEST EXCAVATION OF NORTH UNIT AT LEACHATE SUMP N-8: 444.7 FT-MSL FOR 3-FIT LINER THICKNESS.
- SOME BORINGS ARE PROJECTED ON THE CROSS SECTIONS FROM THEIR ACTUAL LOCATIONS.

REV. NO.	DATE	DESCRIPTION

CBI CB&I Environmental & Infrastructure, Inc.
TBPE FIRM F-5650

3-2-2015

THIS DOCUMENT IS RELEASED FOR THE PURPOSE OF PERMITTING UNDER THE AUTHORITY OF MICHAEL W. ODEN, P.E. 67165.

MICHAEL W. ODEN
REGISTERED PROFESSIONAL ENGINEER
67165

PESCADITO ENVIRONMENTAL RESOURCE CENTER
WEBB COUNTY, TEXAS
MSW 2374

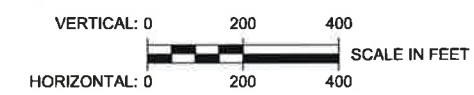
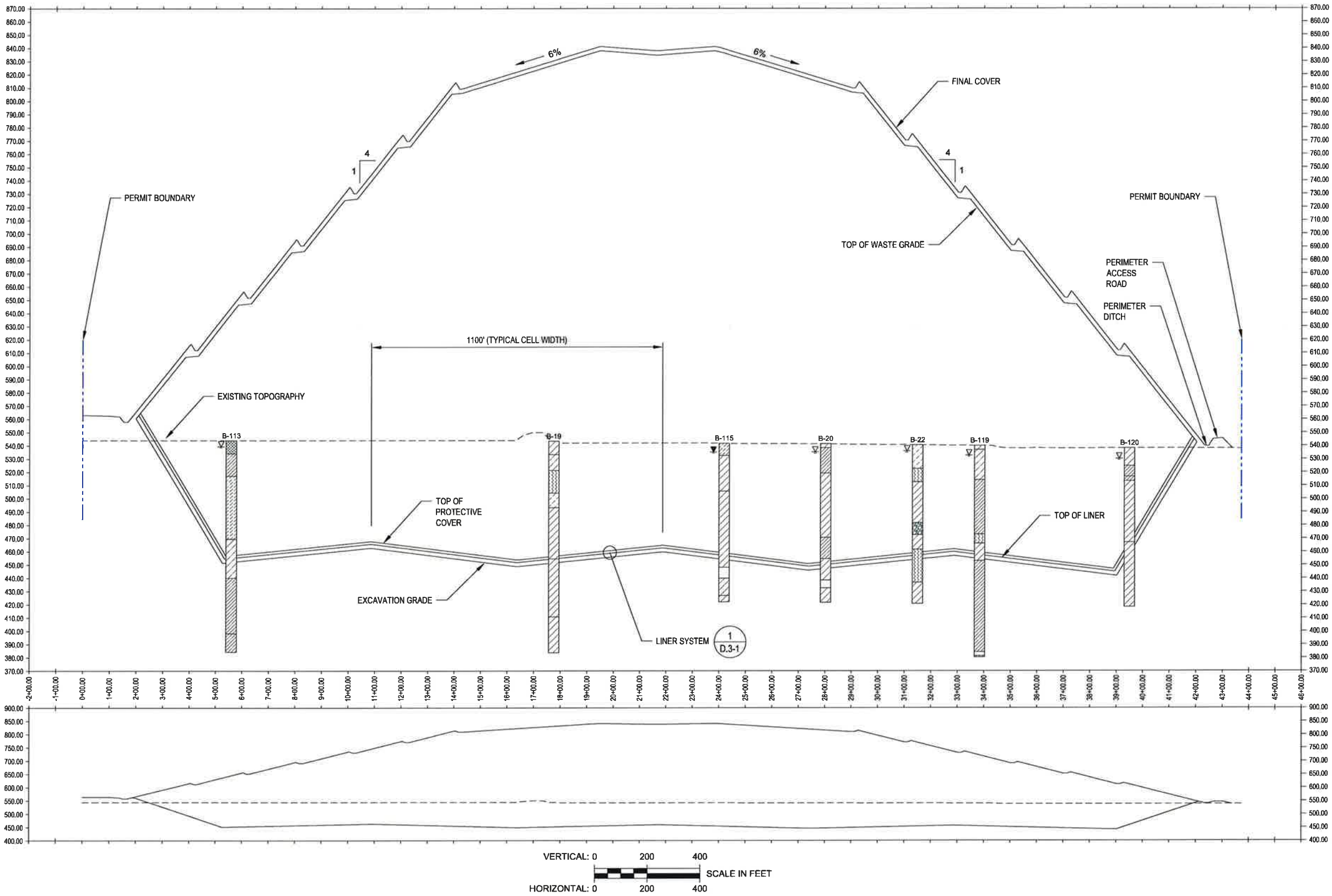
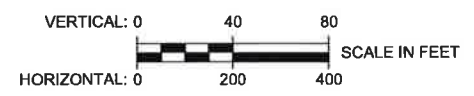
NORTH UNIT
LANDFILL SECTION B - B'

PROJ. NO.:	148866	DATE:	MARCH 2015
DESIGNED BY:	-	DRAWING NO.:	III D.2-3
DRAWN BY:	MTE		
CHECKED BY:	RDS		
APPROVED BY:	MWO		

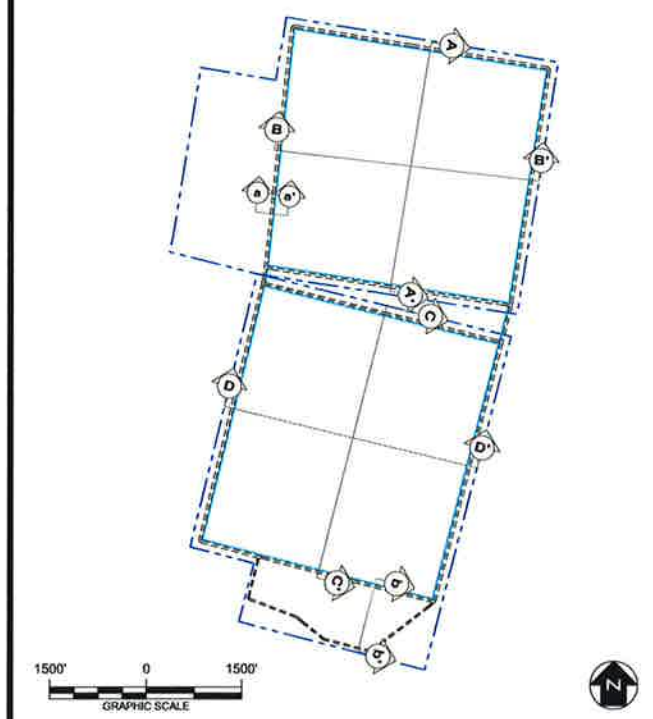
3 OF 6 SHEETS

C

C'



KEYMAP



KEYMAP LEGEND

- APPROXIMATE FACILITY BOUNDARY
- PERIMETER ROAD
- PERIMETER DITCH

LEGEND

- | | |
|-----------------|--------------------------|
| FAT CLAY (CH) | SANDY FAT CLAY (CH) |
| LEAN CLAY (CL) | SANDY LEAN CLAY (CL) |
| SILT (ML) | POORLY GRADED SAND (SP) |
| ELASTIC SILT | SILTSTONE |
| CLAYEY SAND | SANDSTONE |
| SANDY SILT (ML) | CLAYSHALE |
| SILTY SAND (SM) | SANDY SILTY CLAY (CL-ML) |

NOTES

1. REFER TO DRAWING III-D.1-3 FOR EXCAVATION PLAN. REFER TO DRAWING III-D.1-4 FOR LANDFILL COMPLETION PLAN.
2. REFER TO PART III, ATTACHMENT D.3 FOR LINER, LEACHATE COLLECTION SYSTEM, AND FINAL COVER DETAILS.
3. REFER TO DRAWING III-D.1-1 FOR BUFFER DISTANCES.
4. REFER TO PART III, ATTACHMENT III-E FOR SUBSURFACE CHARACTERIZATION AND GROUNDWATER ELEVATIONS
5. MAXIMUM SOUTH UNIT FINAL COVER ELEVATION: 843 FT-MSL. MAXIMUM SOUTH UNIT ELEVATION OF WASTE: 840 FT-MSL. DEEPEST EXCAVATION AT LEACHATE SUMP S-8: 431.3 FT-MSL FOR 3-FT LINER THICKNESS.
6. SOME BORINGS ARE PROJECTED ON THE CROSS SECTIONS FROM THEIR ACTUAL LOCATIONS.

REV. NO.	DATE	DESCRIPTION

CB&I Environmental & Infrastructure, Inc.
TBPE FIRM F-5650

CB&I Environmental and Infrastructure, Inc. has prepared this document for a specific project or purpose. All information contained within this document is copyrighted and remains intellectual property of CB&I Environmental and Infrastructure, Inc. This document may not be used or copied, in part or in whole, for any reason without expressed written consent by CB&I Environmental and Infrastructure, Inc.

3-2-2015

THIS DOCUMENT IS RELEASED FOR THE PURPOSE OF PERMITTING UNDER THE AUTHORITY OF MICHAEL W. ODEN, P.E. 67165.

Michael W. Oden

PESCADITO ENVIRONMENTAL RESOURCE CENTER
WEBB COUNTY, TEXAS
MSW 2374

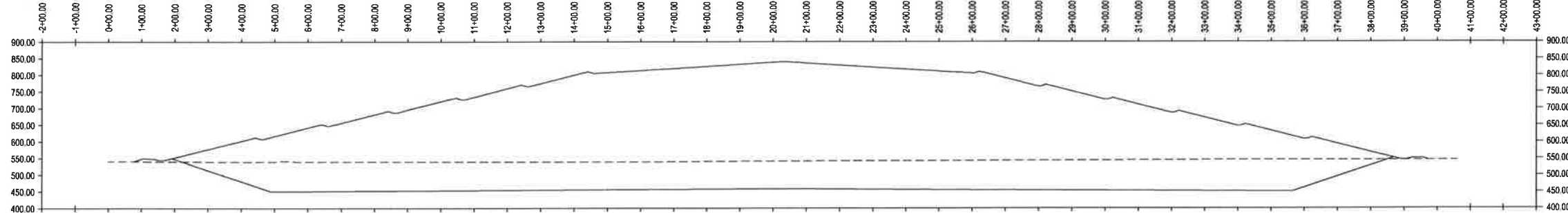
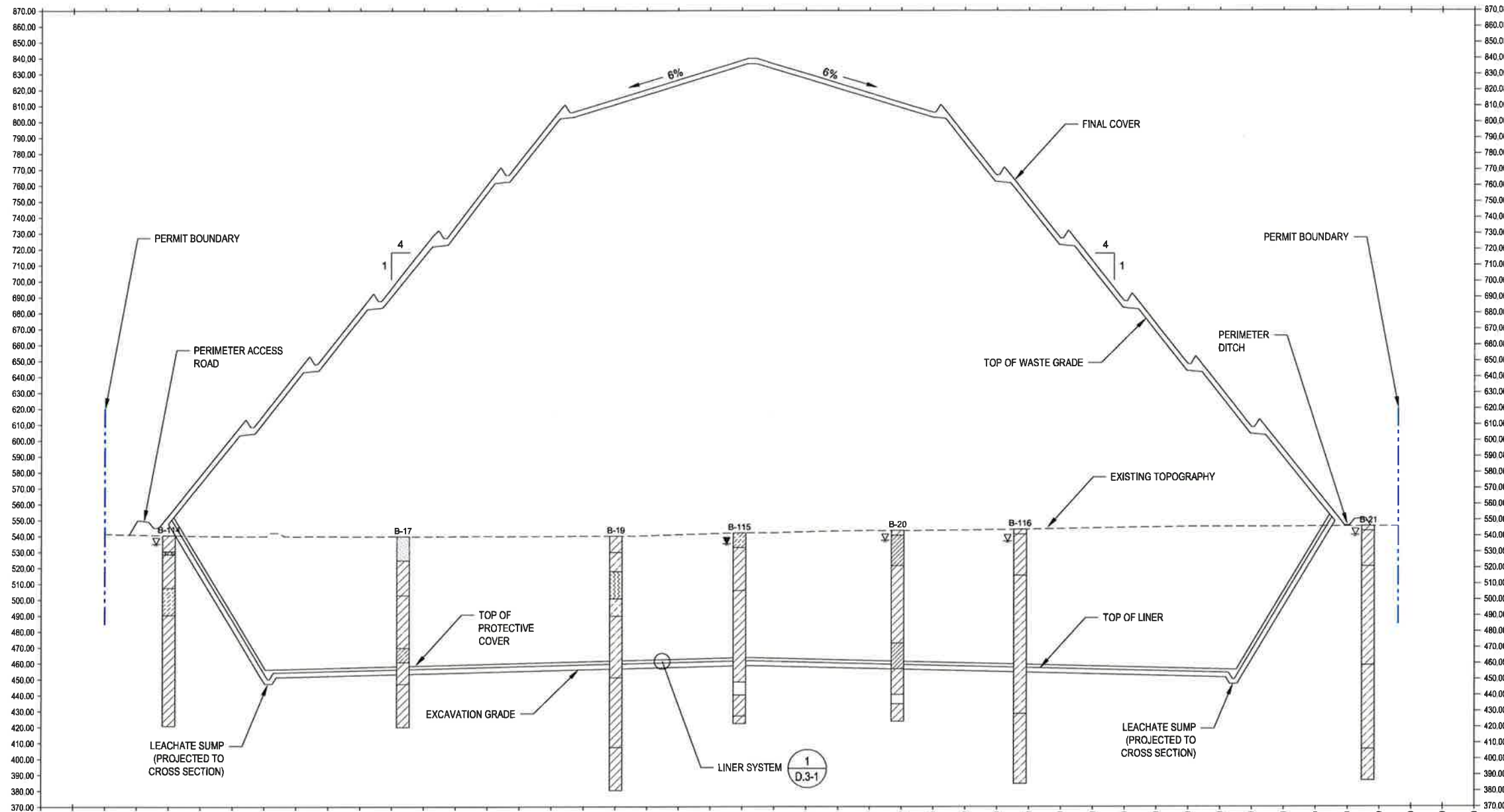
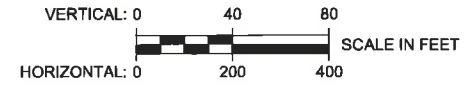
SOUTH UNIT
LANDFILL SECTION C - C'

PROJ. NO.:	148866	DATE:	MARCH 2015
DESIGNED BY:	-	DRAWING NO.:	III D.2-4
DRAWN BY:	MTE		
CHECKED BY:	RDS		
APPROVED BY:	MWO		

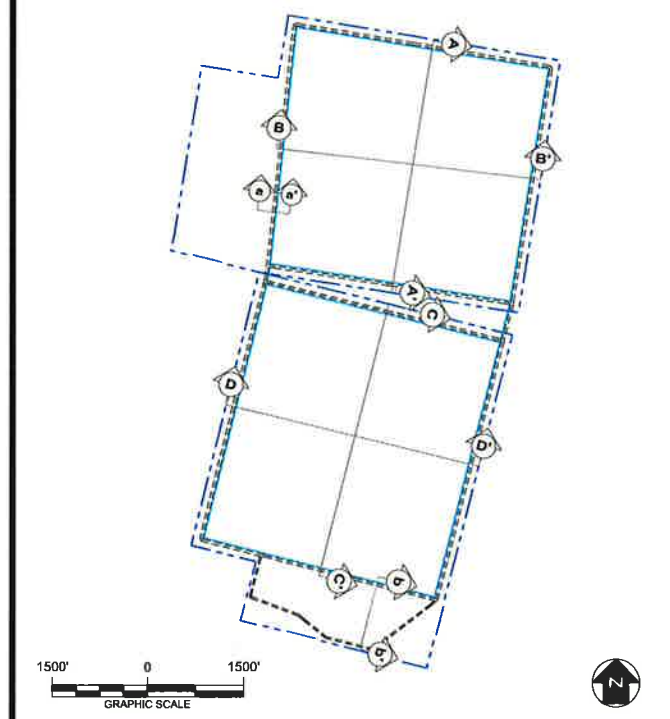
4 OF 6 SHEETS

D

D'



KEYMAP



KEYMAP LEGEND

- APPROXIMATE FACILITY BOUNDARY
- PERIMETER ROAD
- PERIMETER DITCH

LEGEND

- | | |
|-----------------|--------------------------|
| FAT CLAY (CH) | SANDY FAT CLAY (CH) |
| LEAN CLAY (CL) | SANDY LEAN CLAY (CL) |
| SILT (ML) | POORLY GRADED SAND (SP) |
| ELASTIC SILT | SILTSTONE |
| CLAYEY SAND | SANDSTONE |
| SANDY SILT (ML) | CLAYSHALE |
| SILTY SAND (SM) | SANDY SILTY CLAY (CL-ML) |

NOTES

1. REFER TO DRAWING III-D.1-3 FOR EXCAVATION PLAN. REFER TO DRAWING III-D.1-4 FOR LANDFILL COMPLETION PLAN.
2. REFER TO PART III, ATTACHMENT D.3 FOR LINER, LEACHATE COLLECTION SYSTEM, AND FINAL COVER DETAILS.
3. REFER TO DRAWING III-D.1-1 FOR BUFFER DISTANCES.
4. REFER TO PART III, ATTACHMENT III-E FOR SUBSURFACE CHARACTERIZATION AND GROUNDWATER ELEVATIONS
5. MAXIMUM SOUTH UNIT FINAL COVER ELEVATION: 843 FT-MSL. MAXIMUM SOUTH UNIT ELEVATION OF WASTE: 840 FT-MSL. DEEPEST EXCAVATION AT LEACHATE SUMP S-8: 431.3 FT-MSL FOR 3-FT LINER THICKNESS.
6. SOME BORINGS ARE PROJECTED ON THE CROSS SECTIONS FROM THEIR ACTUAL LOCATIONS.

REV. NO.	DATE	DESCRIPTION

CB&I Environmental & Infrastructure, Inc.
TBPE FIRM F-5650

CB&I Environmental and Infrastructure, Inc. has prepared this document for a specific project or purpose. All information contained within this document is copyrighted and remains intellectual property of CB&I Environmental and Infrastructure, Inc. This document may not be used or copied, in part or in whole, for any reason without expressed written consent by CB&I Environmental and Infrastructure, Inc.

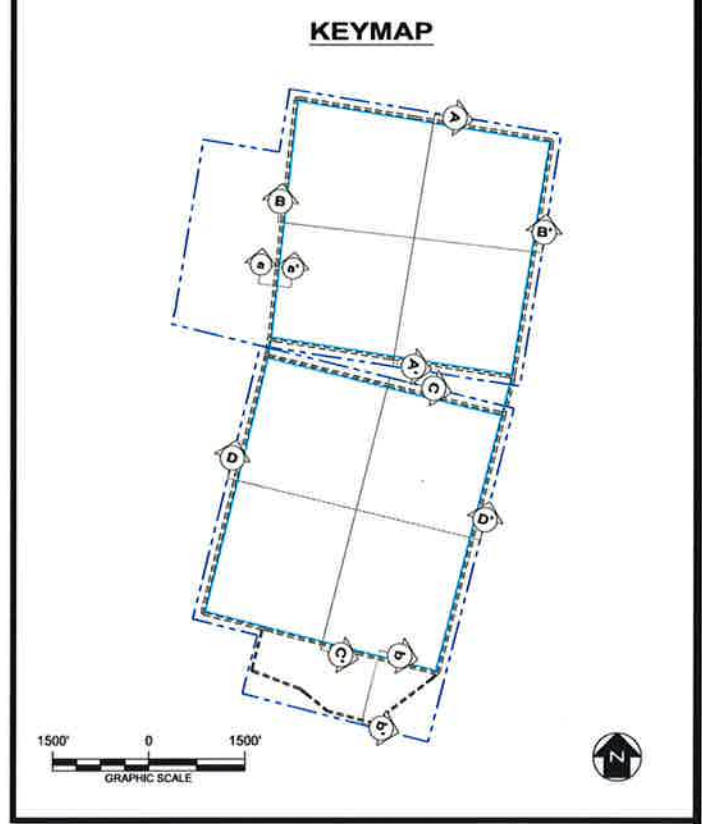
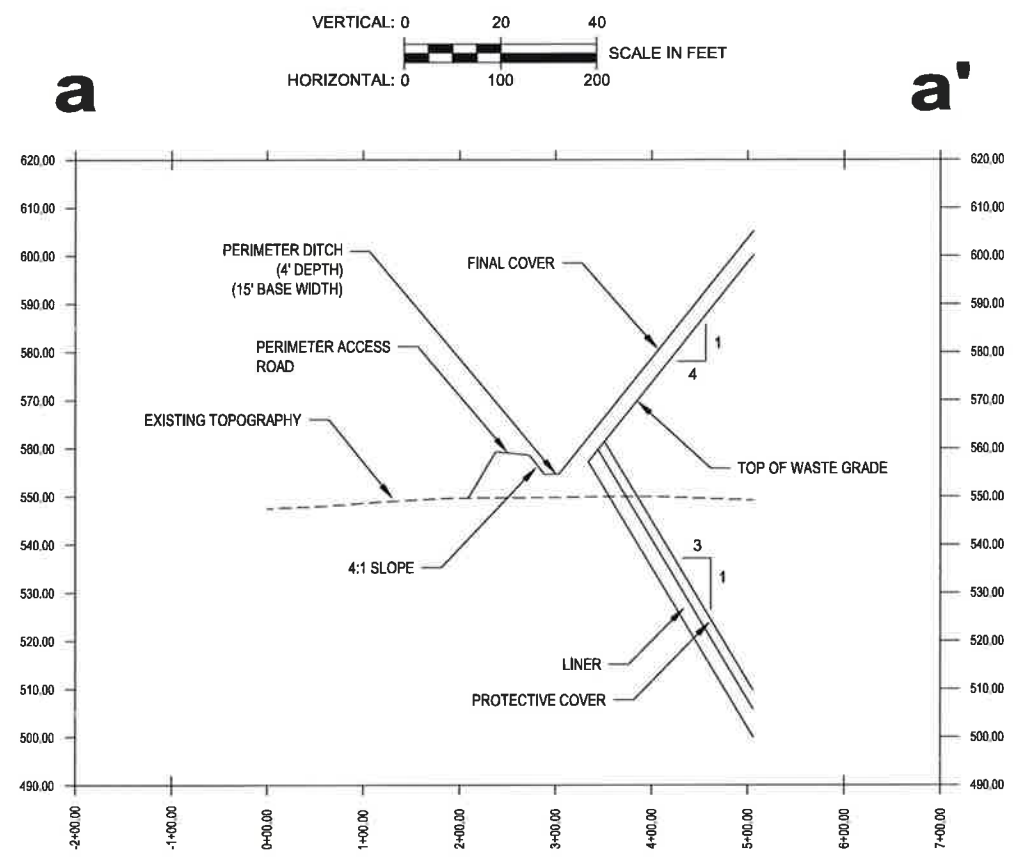
3-2-2017

THIS DOCUMENT IS RELEASED FOR THE PURPOSE OF PERMITTING UNDER THE AUTHORITY OF MICHAEL W. ODEN, P.E. 67165.

PESCADITO ENVIRONMENTAL RESOURCE CENTER
WEBB COUNTY, TEXAS
MSW 2374

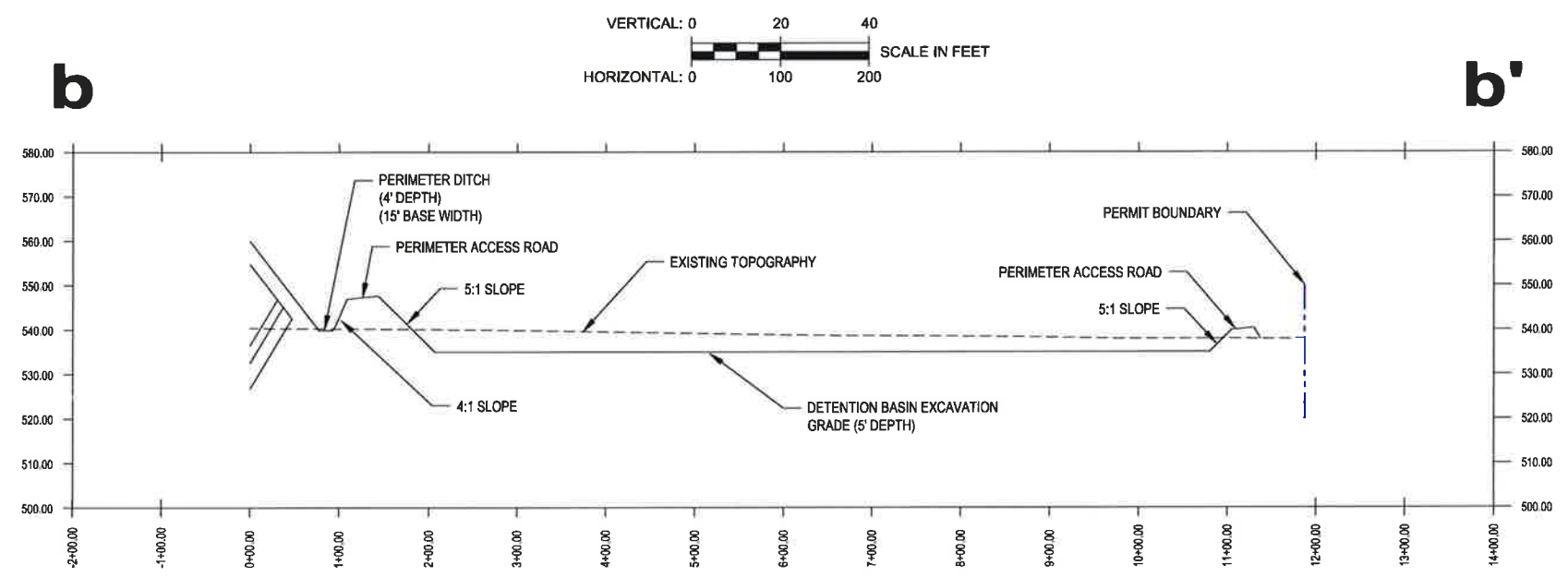
SOUTH UNIT
LANDFILL SECTION D - D'

PROJ. NO.: 148866	DATE: MARCH 2015
DESIGNED BY: -	DRAWING NO. III
DRAWN BY: MTE	D.2-5
CHECKED BY: RDS	5 OF 6 SHEETS
APPROVED BY: MWO	



KEYMAP LEGEND

- APPROXIMATE FACILITY BOUNDARY
- PERIMETER ROAD
- PERIMETER DITCH



REV. NO.	DATE	DESCRIPTION

CBI CB&I Environmental & Infrastructure, Inc.
 T&E FIRM F-5650

CB&I Environmental and Infrastructure, Inc. has prepared this document for a specific project or purpose. All information contained within this document is copyrighted and remains intellectual property of CB&I Environmental and Infrastructure, Inc. This document may not be used or copied, in part or in whole, for any reason without expressed written consent by CB&I Environmental and Infrastructure, Inc.

3-2-2015

THIS DOCUMENT IS RELEASED FOR THE PURPOSE OF PERMITTING UNDER THE AUTHORITY OF MICHAEL W. ODEN, P.E. 67165.

PESCADITO ENVIRONMENTAL RESOURCE CENTER
WEBB COUNTY, TEXAS
MSW 2374

LANDFILL SECTIONS a - a' & b - b'

PROJ. NO.: 148866	DATE: MARCH 2015
DESIGNED BY: -	DRAWING NO. III
DRAWN BY: MTE	D.2-6
CHECKED BY: RDS	6 OF 6 SHEETS
APPROVED BY: MWO	