

Part III
Attachment III-B
Appendix III-B.1

GENERAL FACILITY DESIGN FIGURES

Pescadito Environmental Resource Center
MSW No. 2374
Webb County, Texas

PESCADITO
ENVIRONMENTAL RESOURCE CENTER

Initial Submittal March 2015
Revised September 2015
Revised November 2105

Prepared for:
Rancho Viejo Waste Management, LLC
1116 Calle del Norte
Laredo, TX 78041

Prepared by:
CB&I Environmental and
Infrastructure, Inc.



12005 Ford Rd, Suite 600
Dallas, TX 75234

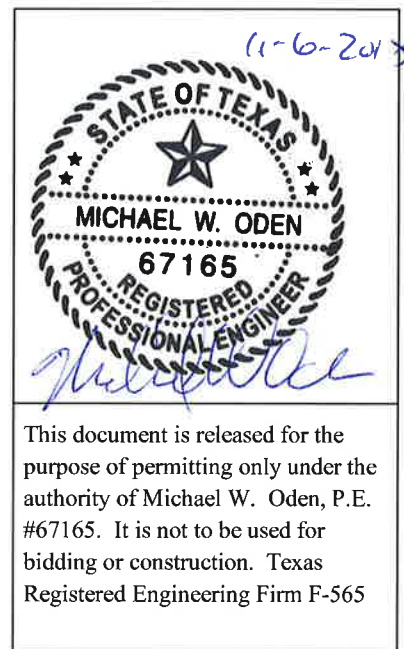
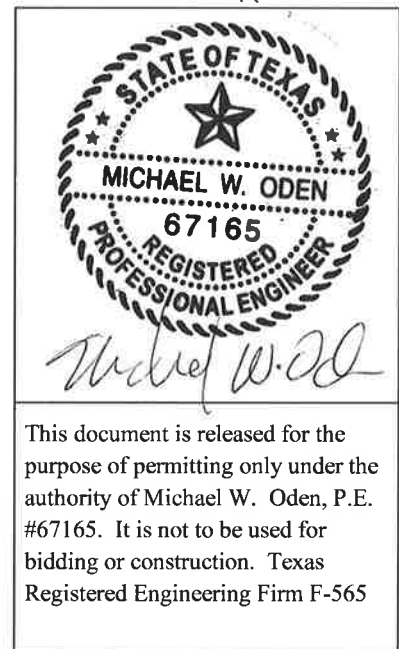
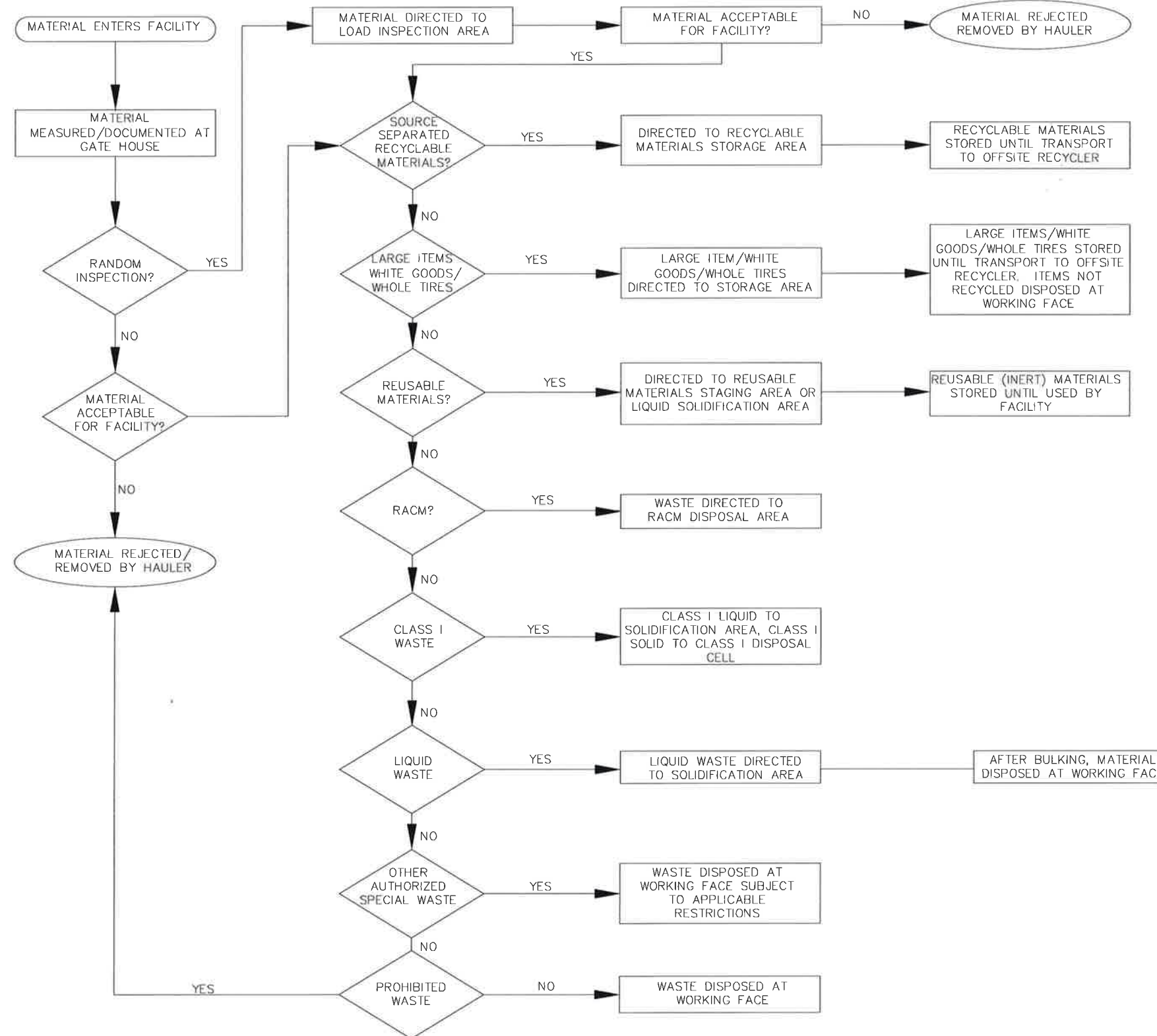


Table of Contents

III-B.1-1 Waste Flow Diagram	1
III-B.1-2 Waste Disposal, Processing and Storage Plan	2
III-B.1-3 Entrance Facilities	3
III-B.1-4 Convenience Center Details	4
III-B.1-5 Liquid Solidification Basin Plan and Details	5
III-B.1-6 Leachate Storage Details	6
III-B.1-7 Evaporation Pond Plan, Profiles and Details.....	7





REV. NO.	DATE	DESCRIPTION



CB&I Environmental & Infrastructure, Inc.
TBPE FIRM F-5650

CB&I Environmental and Infrastructure, Inc. has prepared this document for a specific project or purpose. All information contained within this document is copyrighted and remains intellectual property of CB&I Environmental and Infrastructure, Inc. This document may not be used or copied, in part or in whole, for any reason without expressed written consent by CB&I Environmental and Infrastructure, Inc.



Michael W. Oden
THIS DOCUMENT IS RELEASED FOR THE PURPOSE OF PERMITTING UNDER THE AUTHORITY OF MICHAEL W. ODEN, P.E. 67165.
3-2-2015

**PESCADITO ENVIRONMENTAL RESOURCE CENTER
WEBB COUNTY, TEXAS
MSW 2374**

WASTE FLOW DIAGRAM

PROJ. NO.:	148866	DATE:	MARCH 2015
DESIGNED BY:		DRAWING NO.	III B.1-1
DRAWN BY:	APD		
CHECKED BY:	RDS		
APPROVED BY:	MWO		1 OF 6 SHEETS



- ## NOTES

- 

CBM Environmental and Infrastructure, Inc. has prepared this document for a specific project or purpose. All information contained within this document is copyrighted and remains intellectual property of CBM Environmental and Infrastructure, Inc. This document may not be used or copied, in part or in whole, for any reason without expressed written consent by CBM Environmental and Infrastructure, Inc.



THIS DOCUMENT IS
RELEASED FOR THE
PURPOSE OF PERMITTING
UNDER THE AUTHORITY
OF MICHAEL W. ODEN,
P.E. 67165

3-2-2015

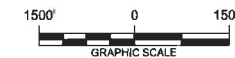
WASTE DISPOSAL, PROCESSING, AND STORAGE PLAN

PROJ. NO.:	148866	DATE:	MARCH 2015
DESIGNED BY:	—	DRAWING NO. III B.1-2	
DRAWN BY:	MTE		
CHECKED BY:	RDS		
APPROVED BY:	MWO		
		2 OF 6 SHEETS	

[illegible]

KEYMAP

ENTRANCE FACILITIES LOCATION

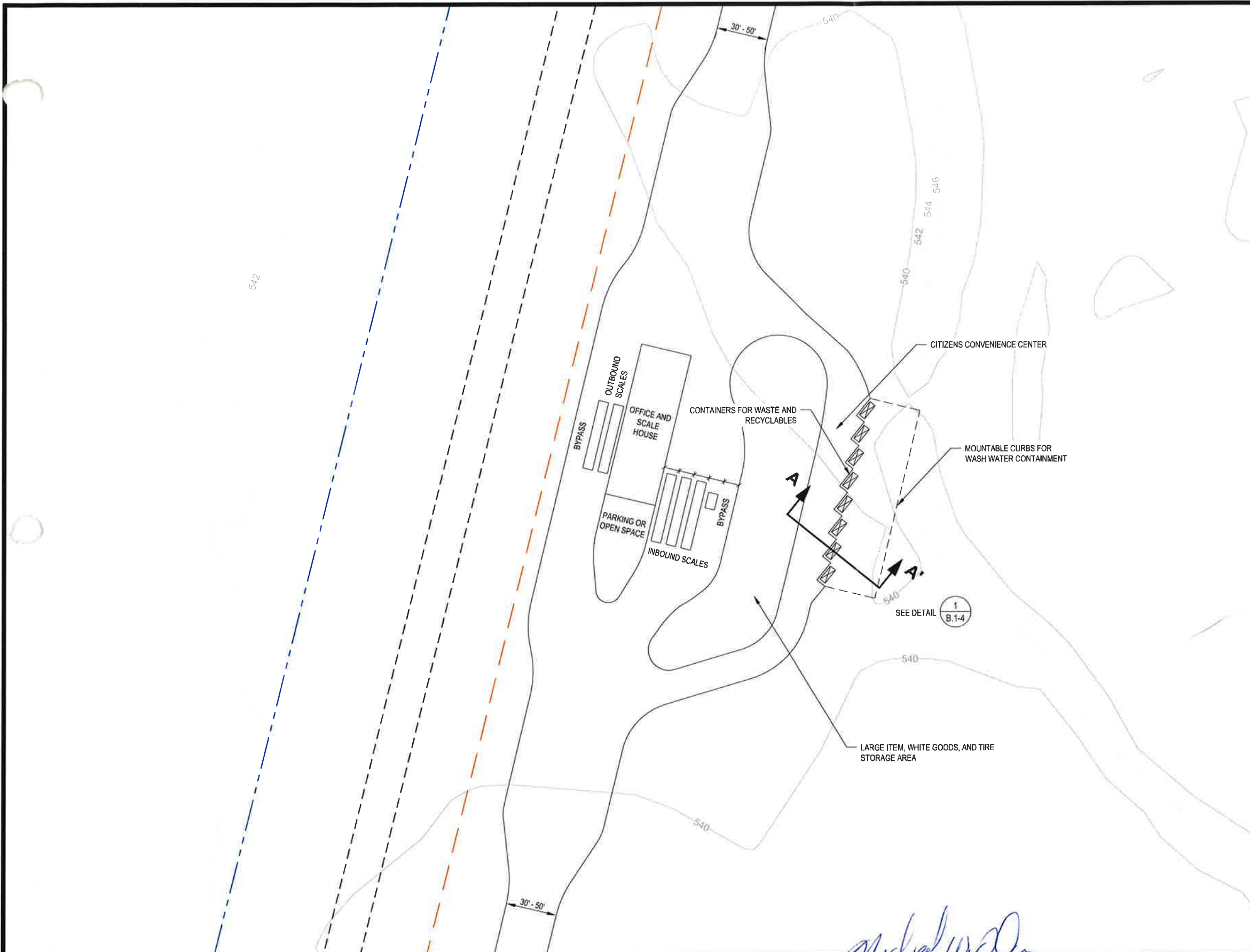
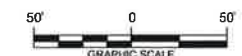


LEGEND

- APPROXIMATE FACILITY BOUNDARY
- APPROXIMATE EXISTING WASTE BOUNDARY
- PERIMETER ROAD

NOTES

- EXISTING CONTOURS DEVELOPED FROM SITE AERIAL TOPOGRAPHIC SURVEY BY DALLAS AERIAL SURVEYS ON FEBRUARY 15, 2010.
- FOR CLARITY, NOT ALL SITE FEATURES MAY BE SHOWN.
- ACTUAL DIMENSIONS, NUMBER OF SCALES, AND NUMBER OF CONTAINERS MAY CHANGE DEPENDING ON AMOUNT OF MATERIAL RECEIVED.



REV. NO.	DATE	DESCRIPTION
1	9/2015	NOD 1



CB&I Environmental & Infrastructure, Inc.
TBPE FIRM F-5650

CB&I Environmental and Infrastructure, Inc. has prepared this document for a specific project or purpose. All information contained within this document is copyrighted and remains intellectual property of CB&I Environmental and Infrastructure, Inc. This document may not be used or copied, in part or in whole, for any reason without expressed written consent by CB&I Environmental and Infrastructure, Inc.



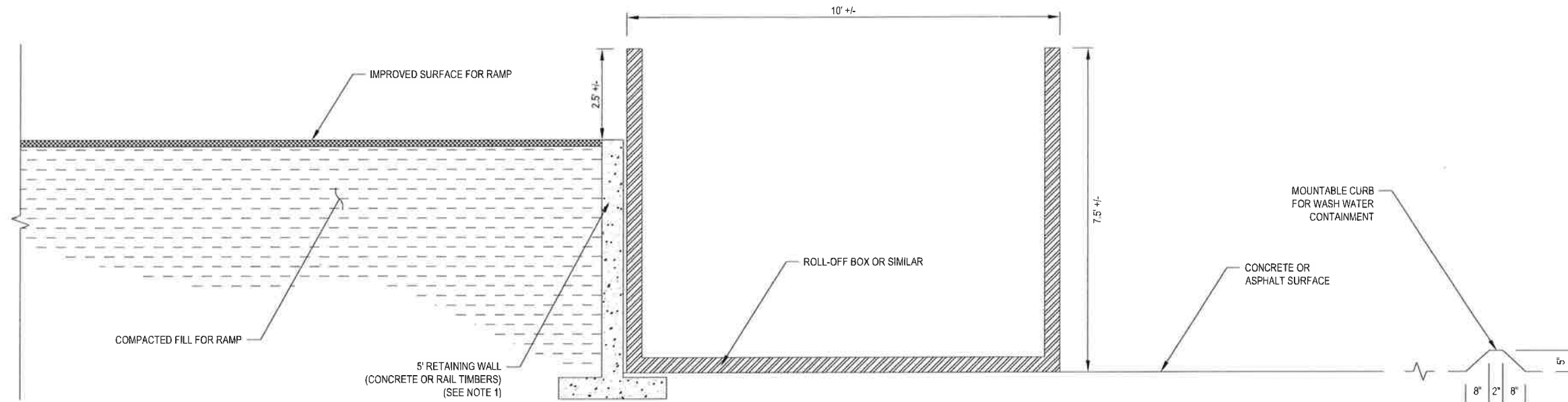
THIS DOCUMENT IS RELEASED FOR THE PURPOSE OF PERMITTING UNDER THE AUTHORITY OF MICHAEL W. ODEN, P.E. 67165.

9-18-2015

**PESCADITO ENVIRONMENTAL RESOURCE CENTER
WEBB COUNTY, TEXAS
MSW 2374**

ENTRANCE FACILITIES

PROJ. NO.: 148866	DATE: APRIL 2015
DESIGNED BY: -	DRAWING NO. III B.1-3
DRAWN BY: APD	
CHECKED BY: RDS	
APPROVED BY: MWO	3 OF 6 SHEETS



1
B.1-4

SECTION A-A'

NOT TO SCALE

NOTES

- CONTAINERS MAY BE INITIALLY SET ON EXISTING GROUND ELEVATION WITH NO RETAINING WALL OR COMPACTED FILL RAMP DEPENDING ON USE AND CONVENIENCE TO CUSTOMERS.

T:\A\1000\Projects\Pescadito\Drawings\B.1-4\B.1-4.dwg, 11/06/2015 10:05:52 AM

REV. NO.	DATE	DESCRIPTION
2	11/2015	NOD 2
1	9/2015	NOD 1



CB&I Environmental & Infrastructure, Inc.
TBPE FIRM F-5650

CB&I Environmental and Infrastructure, Inc. has prepared this document for a specific project or purpose. All information contained within this document is copyrighted and remains intellectual property of CB&I Environmental and Infrastructure, Inc. This document may not be used or copied, in part or in whole, for any reason without expressed written consent by CB&I Environmental and Infrastructure, Inc.

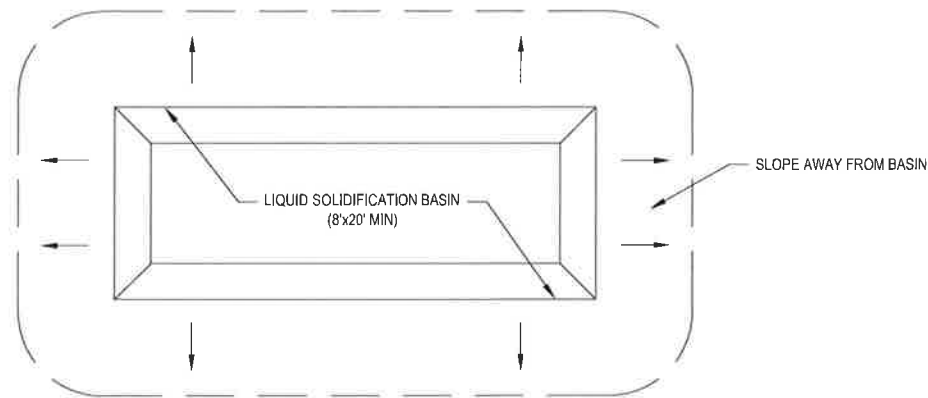


THIS DOCUMENT IS RELEASED FOR THE PURPOSE OF PERMITTING UNDER THE AUTHORITY OF MICHAEL W. ODEN, P.E. 67165.

**PESCADITO ENVIRONMENTAL RESOURCE CENTER
WEBB COUNTY, TEXAS
MSW 2374**

CONVENIENCE CENTER DETAILS

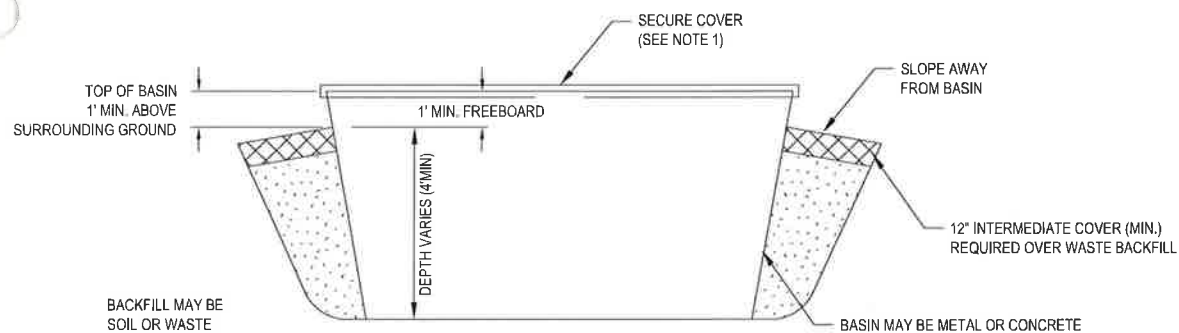
PROJ. NO.: 148866	DATE: APRIL 2015
DESIGNED BY: MTE	DRAWING NO. III
DRAWN BY: MTE	B.1-4
CHECKED BY: RDS	4 OF 6 SHEETS
APPROVED BY: MWO	



1
B.1-5 **TEMPORARY LIQUID SOLIDIFICATION BASIN PLAN VIEW**
NOT TO SCALE

NOTE:

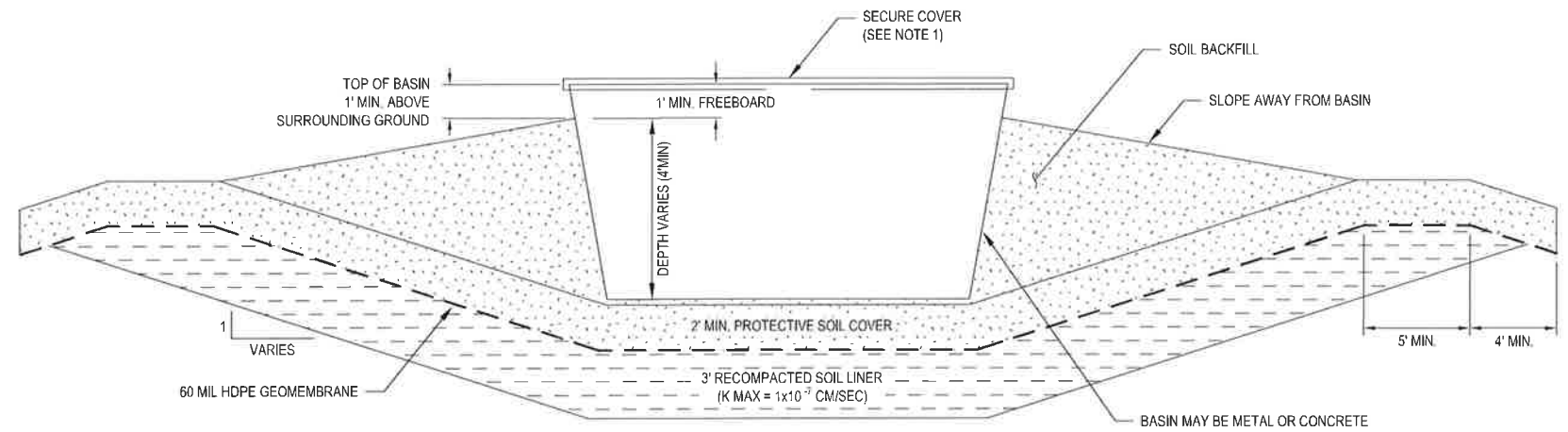
1. STORMWATER TO BE DIRECTED AWAY FROM BASIN
2. THIS PLAN IS CONCEPTUAL. ACTUAL DIMENSIONS OF THE BASIN WILL VARY.



2
B.1-5 **TYPICAL CROSS SECTION TEMPORARY BASIN LOCATED OVER LINED CELL**
NOT TO SCALE

NOTE:

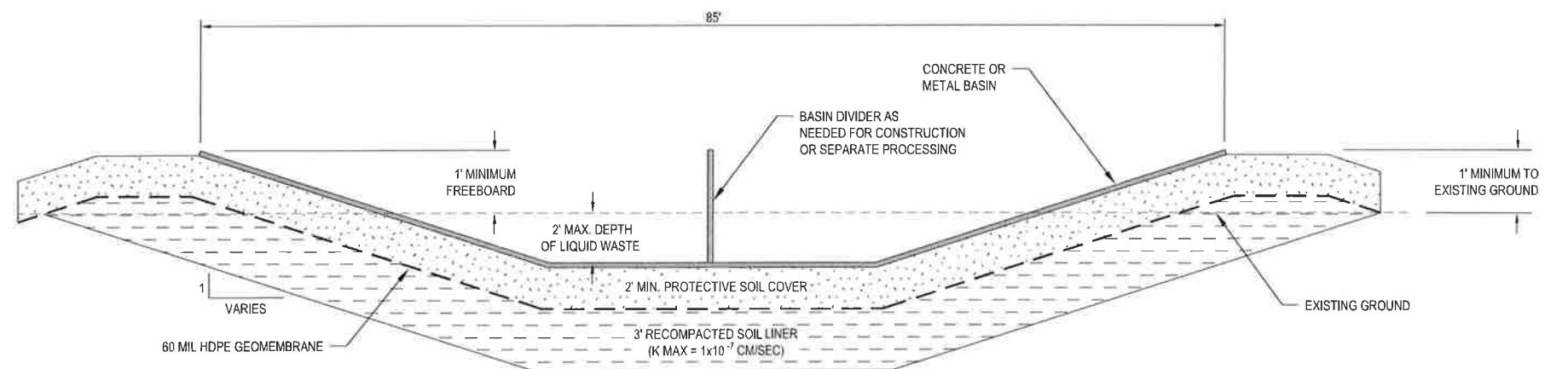
1. A SECURE COVER WILL BE PLACED OVER THE TEMPORARY CONTAINER ANY TIME PROCESSED OR UNPROCESSED WASTE REMAINS IN THE CONTAINER OVERNIGHT
2. THIS SECTION IS CONCEPTUAL. ACTUAL DIMENSIONS OF THE BASIN WILL VARY. THE NUMBER OF BASINS WILL VARY DEPENDING ON WASTE RECEIPTS.
3. THIS BASIN CONFIGURATION MAY ONLY BE PLACED IN EXISTING WASTE OVER THE EXISTING COMPOSITE LINED CELLS



3
B.1-5 **TYPICAL CROSS SECTION TEMPORARY BASIN LOCATED OUTSIDE OF WASTE CELL**
NOT TO SCALE

NOTE:

1. A SECURE COVER WILL BE PLACED OVER THE TEMPORARY CONTAINER ANY TIME PROCESSED OR UNPROCESSED WASTE REMAINS IN THE CONTAINER OVERNIGHT
2. THIS SECTION IS CONCEPTUAL. ACTUAL DIMENSIONS OF THE BASIN WILL VARY. THE BASIN SHALL BE AT A MINIMUM: 8 FEET WIDE, 20 FEET LONG, AND 5 FEET DEEP (4 FEET PLUS 1 FOOT FREEBOARD). THE NUMBER OF BASINS WILL VARY DEPENDING ON WASTE RECEIPTS.
3. 2' OR 3' RECOMPACTED SOIL LINER AND 60 MIL HDPE GEOCOMPOSITE LINER AND 2' SOIL PROTECTIVE COVER TO BE CONSTRUCTED IN ACCORDANCE WITH APPENDIX III-D.7 (LINER QUALITY CONTROL PLAN)
4. THIS BASIN CONFIGURATION AND CONSTRUCTION WILL BE UTILIZED OUTSIDE OF EXISTING WASTE BUT WITHIN PERMIT BOUNDARY.
5. MULTIPLE UNITS MAY BE USED DEPENDING ON AMOUNT OF INCOMING WASTE.
6. UNITS WILL ONLY BE CONSTRUCTED AS NEED DICTATES.



4
B.1-5 **TYPICAL CROSS SECTION PERMANENT LIQUID SOLIDIFICATION BASIN**
NOT TO SCALE

NOTE:

1. PERMANENT BASIN MAY BE CONSTRUCTED IN PHASES AS WASTE RECEIPTS DICTATE.

REV. NO.	DATE	DESCRIPTION
1	9/2015	NOD 1



CB&I Environmental & Infrastructure, Inc.
TBPE FIRM F-5650

CB&I Environmental and Infrastructure, Inc. has prepared this document for a specific project or purpose. All information contained within this document is copyrighted and remains intellectual property of CB&I Environmental and Infrastructure, Inc. This document may not be used or copied, in part or in whole, for any reason without express written consent by CB&I Environmental and Infrastructure, Inc.



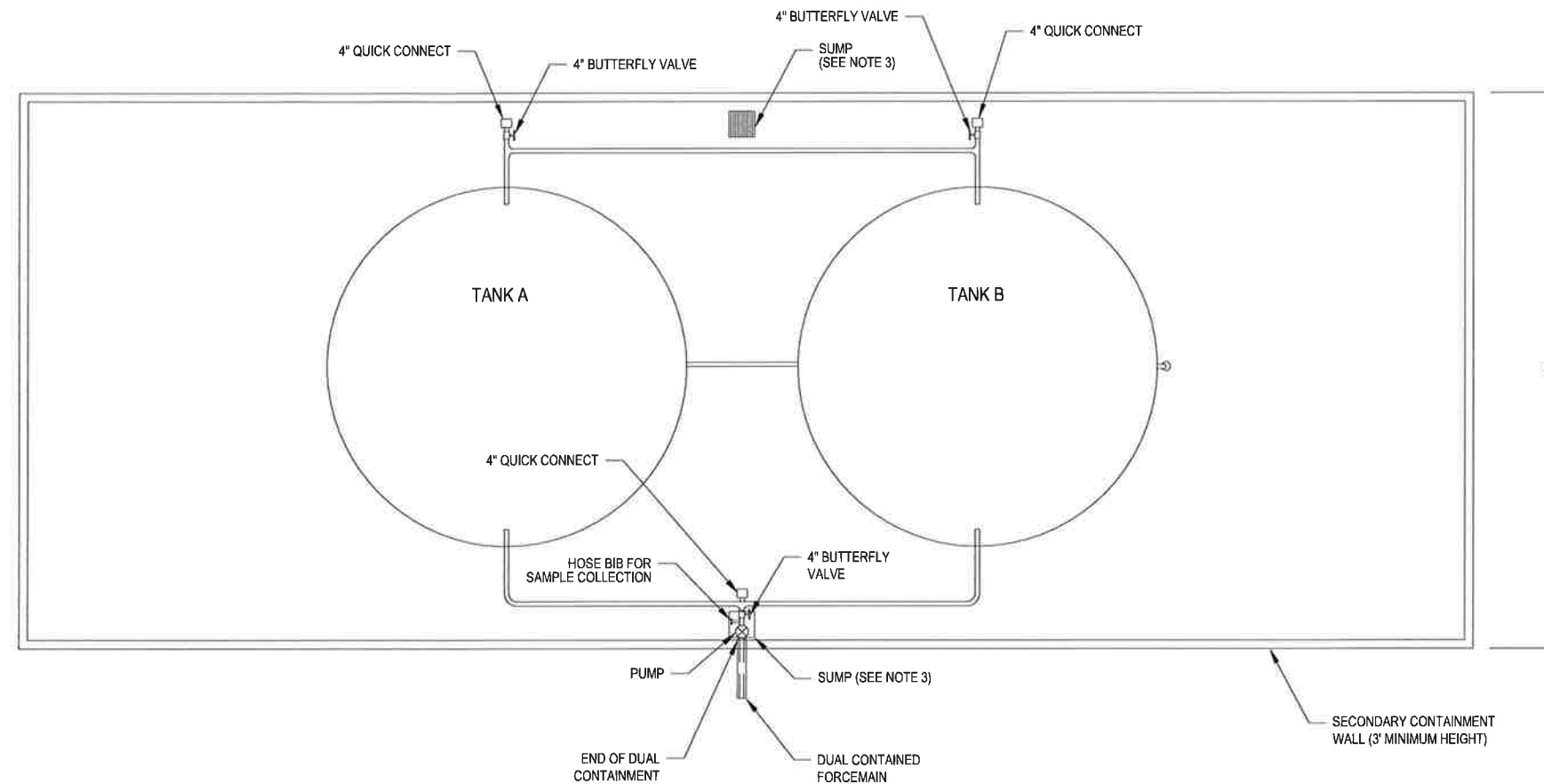
THIS DOCUMENT IS RELEASED FOR THE PURPOSE OF PERMITTING UNDER THE AUTHORITY OF MICHAEL W. ODEN, P.E. 67165.

9-18-2015

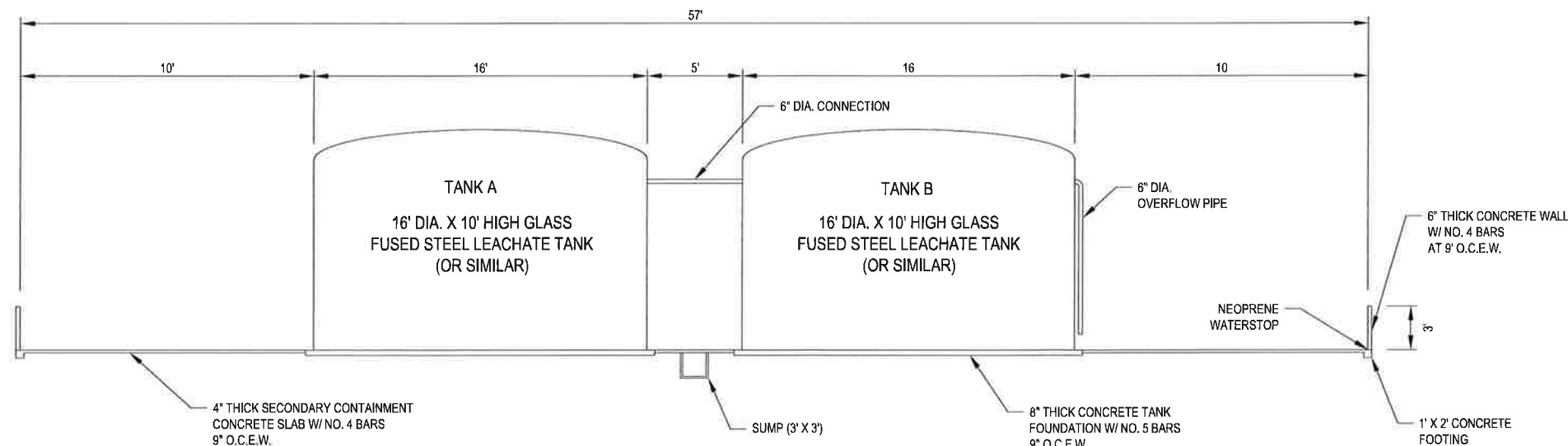
**PESCADITO ENVIRONMENTAL RESOURCE CENTER
WEBB COUNTY, TEXAS
MSW 2374**

LIQUID SOLIDIFICATION BASIN PLAN AND DETAILS

PROJ. NO.: 148866	DATE: APRIL 2015
DESIGNED BY:	DRAWING NO. III B.1-5
DRAWN BY: MTE	5 OF 6 SHEETS
CHECKED BY: RDS	
APPROVED BY: MWO	



1
D.3-9 **LEACHATE STORAGE TANK FACILITY PLAN**
NOT TO SCALE



2
D.3-9 **LEACHATE STORAGE TANK FACILITY SECTION**
NOT TO SCALE

NOTES:

1. REFER TO APPENDIX III-D.6 FOR DISCUSSION ON THE LEACHATE STORAGE FACILITY.
2. REFER TO APPENDIX III-D.6 FOR THE SECONDARY CONTAINMENT VOLUME CALCULATIONS FOR THE LEACHATE STORAGE FACILITY.
3. SUMPS ARE 3' WIDE AND 3' DEEP.
4. CONCRETE SECTIONS MAY VARY PENDING FINAL TANK SELECTION, SIZE, AND DESIGN.

REV. NO.	DATE	DESCRIPTION



CB&I Environmental & Infrastructure, Inc.
TBPE FIRM F-5650

CB&I Environmental and Infrastructure, Inc. has prepared this document for a specific project or purpose. All information contained within this document is copyrighted and remains intellectual property of CB&I Environmental and Infrastructure, Inc. This document may not be used or copied, in part or in whole, for any reason without express written consent by CB&I Environmental and Infrastructure, Inc.



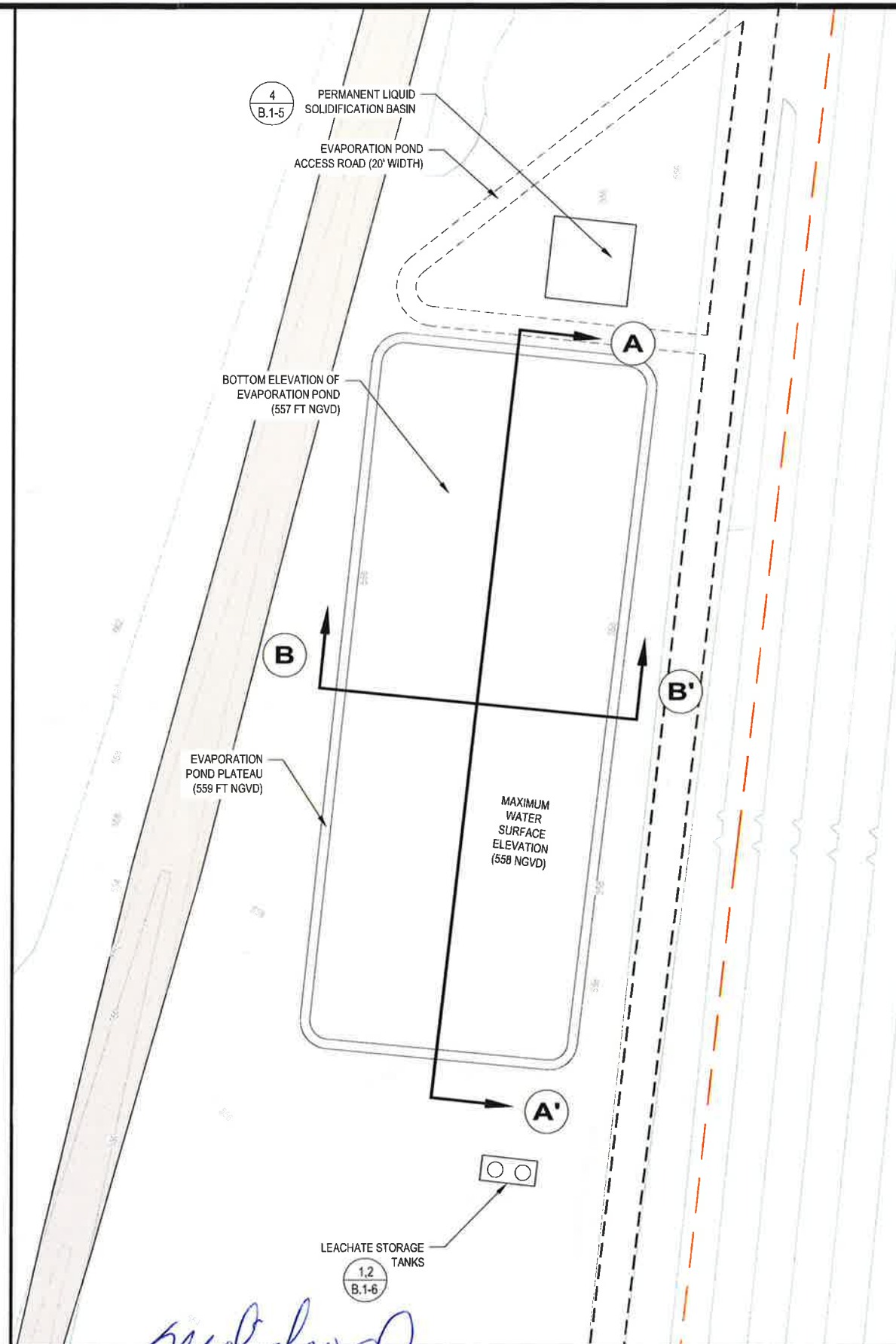
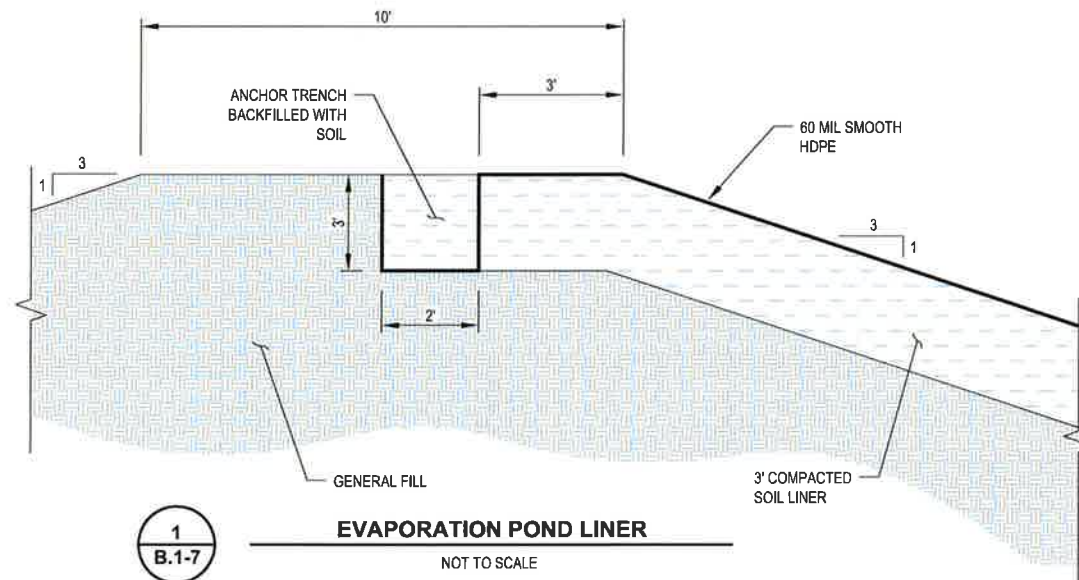
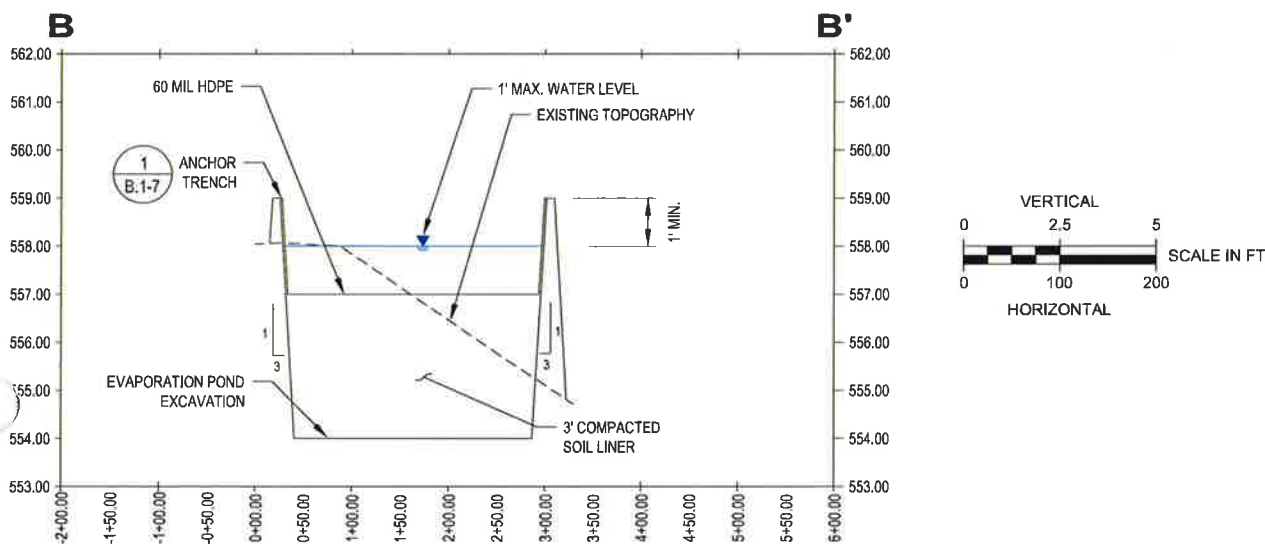
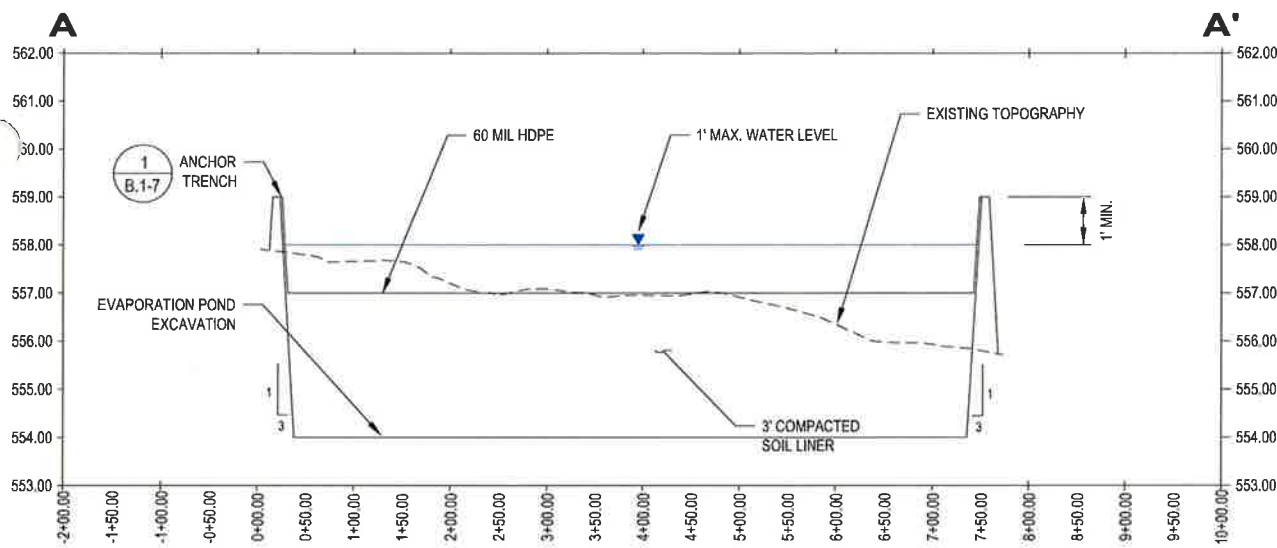
THIS DOCUMENT IS RELEASED FOR THE PURPOSE OF PERMITTING UNDER THE AUTHORITY OF MICHAEL W. ODEN, P.E. 67165.

3-2-2015

**PESCADITO ENVIRONMENTAL RESOURCE CENTER
WEBB COUNTY, TEXAS
MSW 2374**

LEACHATE STORAGE DETAILS

PROJ. NO.:	148866	DATE:	MARCH 2015
DESIGNED BY:	—	DRAWING NO.	III
DRAWN BY:	APD		B.1-6
CHECKED BY:	RDS		6 OF 6 SHEETS
APPROVED BY:	MWO		



LEGEND

- WASTE UNIT BOUNDARY
- PERIMETER ACCESS ROAD
- EVAPORATION POND ACCESS ROAD
- CLOMR 100-YEAR FLOODPLAIN

NOTES

- EXISTING CONTOURS DEVELOPED FROM SITE AERIAL TOPOGRAPHIC SURVEY BY DALLAS AERIAL SURVEYS ON FEBRUARY 15, 2010.
- COMPACTED SOIL LINER TO BE 3- FEET THICK FOR CONTAMINATED WATER FROM CLASS I WASTE.
- FOR CLARITY, NOT ALL SITE FEATURES MAY BE SHOWN.
- THE NEED FOR FLEXIBILITY TO ACCOMMODATE ADJUSTMENTS AND MODIFICATIONS IS ANTICIPATED CONSIDERING THE SIZE, COMPLEXITY, AND LIFE OF THE PROJECT.
- MAXIMUM WATER LEVEL IN EVAPORATION POND TO BE ONE FOOT.

REV. NO.	DATE	DESCRIPTION
1	9/2015	NOD 1



CB&I Environmental & Infrastructure, Inc.
TBPE FIRM F-5650

CB&I Environmental and Infrastructure, Inc. has prepared this document for a specific project or purpose. All information contained within this document is copyrighted and remains the intellectual property of CB&I Environmental and Infrastructure, Inc. This document may not be used or copied, in part or in whole, for any reason without expressed written consent by CB&I Environmental and Infrastructure, Inc.



THIS DOCUMENT IS RELEASED FOR THE PURPOSE OF PERMITTING UNDER THE AUTHORITY OF MICHAEL W. ODEN, P.E. 67165.

7-18-2015

**PESCADITO ENVIRONMENTAL RESOURCE CENTER
WEBB COUNTY, TEXAS
MSW 2374**

EVAPORATION POND PLAN, PROFILES, AND DETAILS

PROJ. NO.: 148866	DATE: APRIL 2015
DESIGNED BY:	DRAWING NO. III
DRAWN BY: MTE	B.1-7
CHECKED BY: RDS	7 OF 7 SHEETS
APPROVED BY: MWO	