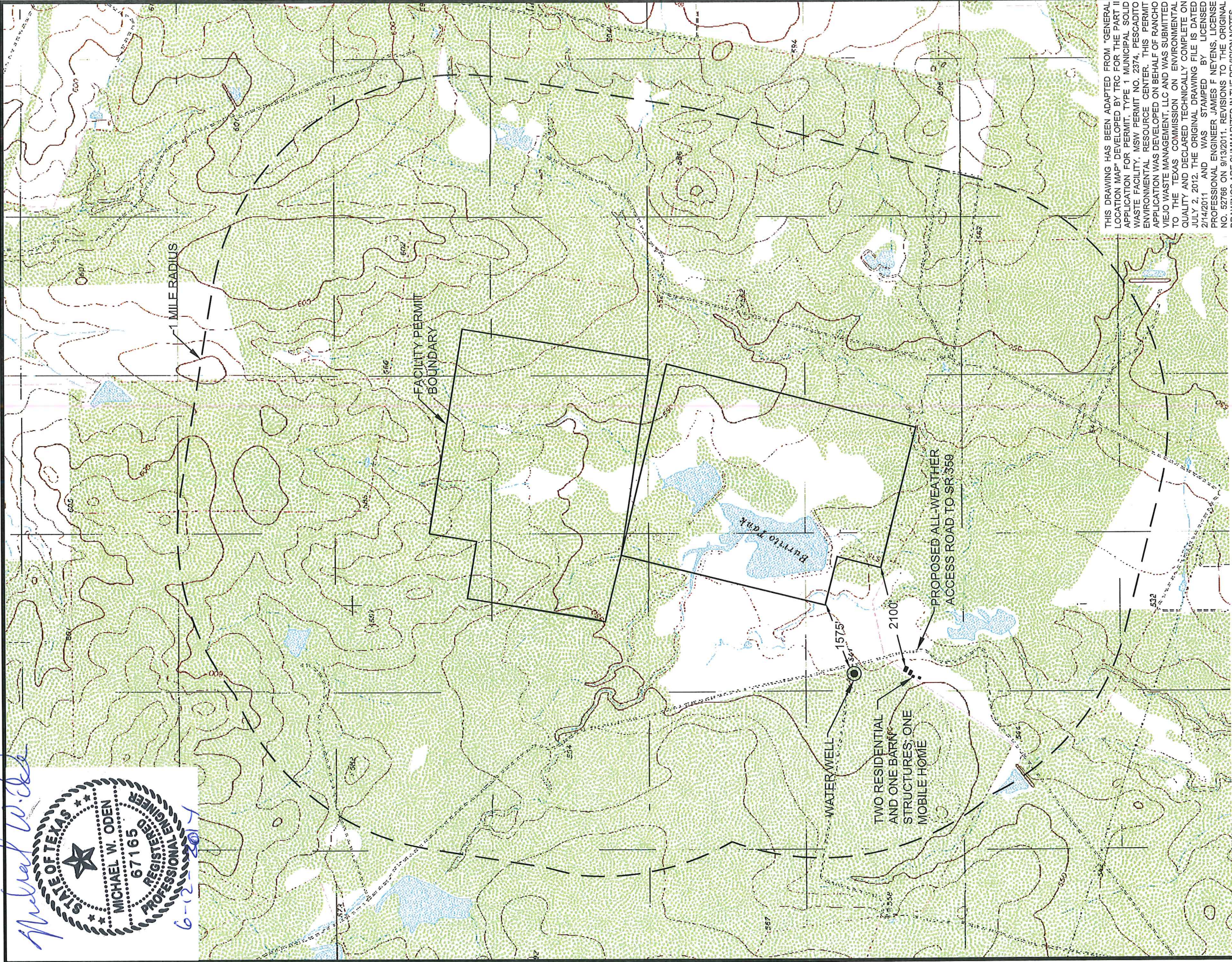


FIGURES

Michael W. Oden

STATE OF TEXAS
MICHAEL W. ODEN
67165
REGISTERED
PROFESSIONAL ENGINEER
6-12-2014



THIS DRAWING HAS BEEN ADAPTED FROM "GENERAL LOCATION MAP" DEVELOPED BY TRC FOR THE PART II APPLICATION FOR PERMIT, TYPE 1 MUNICIPAL SOLID WASTE FACILITY, MSW PERMIT NO. 2374, PESCADITO ENVIRONMENTAL RESOURCE CENTER. THIS PERMIT APPLICATION WAS DEVELOPED ON BEHALF OF RANCHO VIEJO WASTE MANAGEMENT, LLC AND WAS SUBMITTED TO THE TEXAS COMMISSION ON ENVIRONMENTAL QUALITY AND DECLARED TECHNICALLY COMPLETE ON JULY 2, 2012. THE ORIGINAL DRAWING FILE IS DATED 2/14/2011 AND WAS STAMPED BY LICENSED PROFESSIONAL ENGINEER JAMES F. NEYENS, LICENSE NO. 52766 ON 9/13/2011. REVISIONS TO THE ORIGINAL DRAWINGS ARE SUMMARIZED IN THE REVISION NOTES.

NOTES

1. NO HOSPITALS WITHIN ONE MILE
2. SITE LOCATED AT (27.559°N, 99.160°W)
3. ROADS USED TO ACCESS THE FACILITY ARE EITHER CONCRETE-PAVED, INCLUDING HWY 59, OR ALL WEATHER CRUSHED ROCK
4. NO AIRPORTS WITHIN 6 MILES
5. SEE FIGURE 4, PART I FOR EASEMENTS
6. SEE FIGURE 1 PART III FOR ACCESS CONTROL FEATURES
7. BASE MAP BY TRC ENVIRONMENTAL CORP. TBPE FIRM F-3775.
8. FACILITY PERMIT BOUNDARY REVISED BY CB&I (SHAW ENVIRONMENTAL, INC.) TBPE FIRM F-5650

LEGEND

- WATER WELL (NONE WITHIN 500')
- STRUCTURE OR INHABITABLE BUILDING (NONE WITHIN 500')
- ★ SCHOOL (NONE WITHIN ONE MILE)
- ✚ CHURCH (NONE WITHIN ONE MILE)
- ⌘ CEMETARY (NONE WITHIN ONE MILE)
- ▲ ARCHAEOLOGICAL OR HISTORICAL SITE (NONE)

U.S.G.S. 7.5-MINUTE SERIES TOPOGRAPHIC MAP, BURRITO TANK (1980), TEXAS.



SCALE IN FEET
1" = 2000'

**CB&I Environmental
& Infrastructure, Inc.**

12005 FORD RD, SUITE 600
DALLAS, TEXAS 75234
(972) 773-9400
CB&I Environmental and Infrastructure, Inc. has prepared this document for a specific project or purpose. All information contained within this document is copyrighted and remains the intellectual property of CB&I Environmental and Infrastructure, Inc. No portion of this document may be reproduced, stored in a retrieval system, or used for any reason without expressed written consent by CB&I Environmental and Infrastructure, Inc.

**PESCADITO ENVIRONMENTAL RESOURCE CENTER
WEBB COUNTY, TEXAS**

**FIGURE 1 - PART II
GENERAL LOCATION MAP**

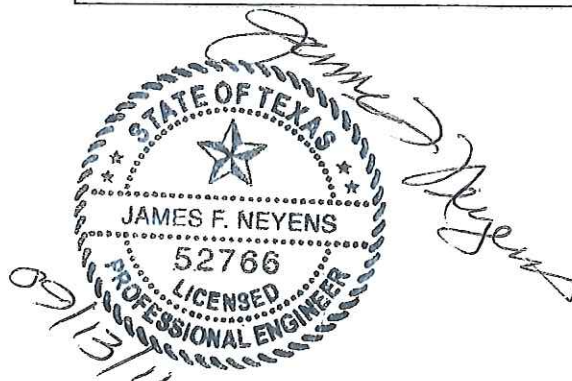
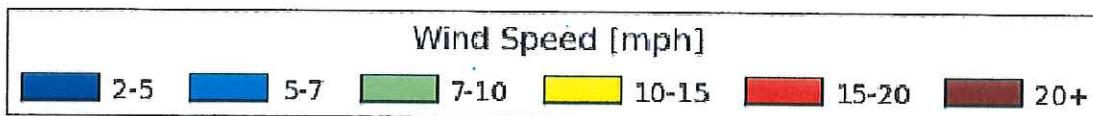
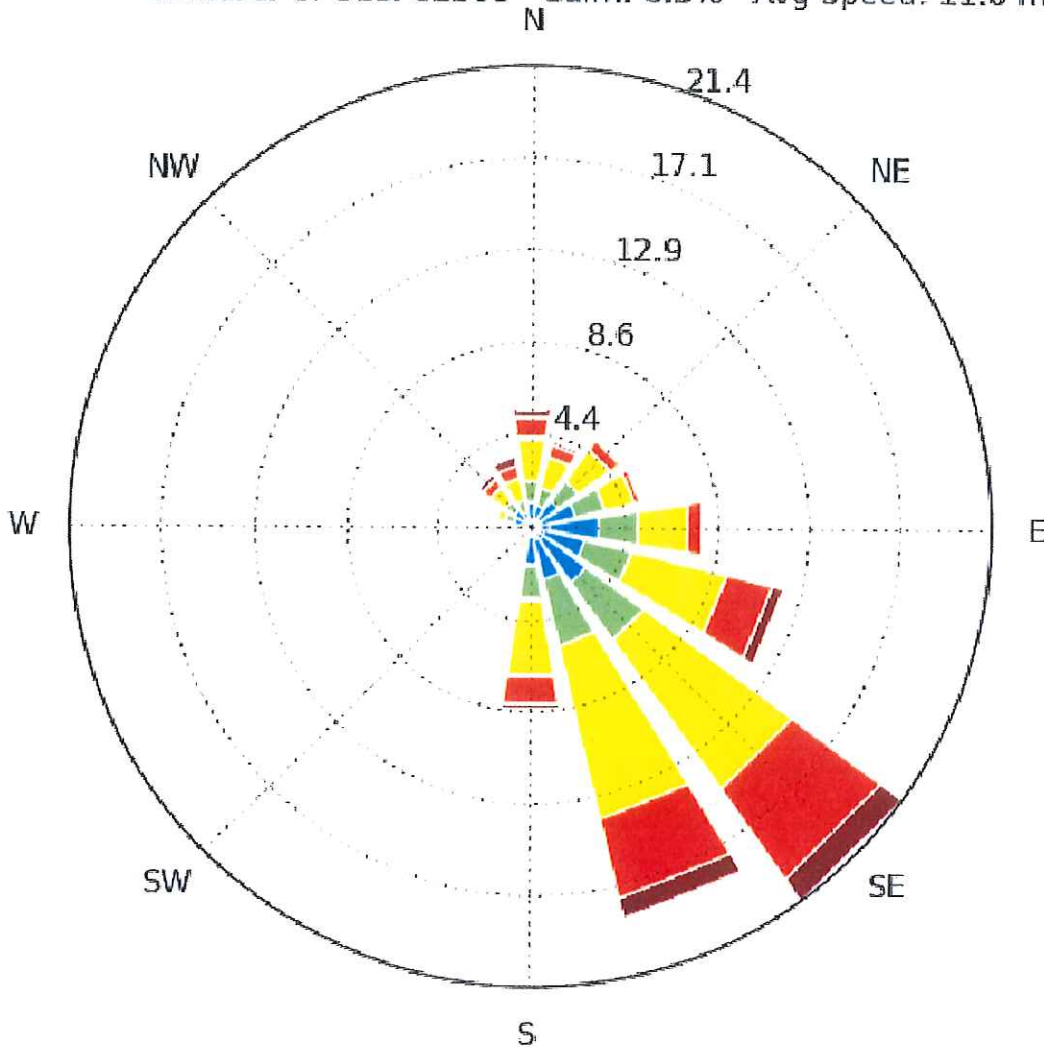
DRAWN BY: MTE APPROVED BY: MWO PROJ. NO.: 148866 DATE: MAY 2014



LAREDO INTL AIRPORT [LRD] Windrose Plot [All Year]

Period of Record: 01 Nov 2000 - 01 Nov 2010

Number of Obs: 81308 Calm: 6.3% Avg Speed: 11.0 mph



SOURCE
IOWA ENVIRONMENTAL MESONET, IOWA STATE
UNIVERSITY DEPARTMENT OF AGRONOMY

WIND ROSE

PESCADITO ENVIRONMENTAL RESOURCE CENTER
MSW PERMIT NO. 2374
WEBB COUNTY, TEXAS

PROJECT NO.	170401	DWG FILE	170401-MSW-II-2
-------------	--------	----------	-----------------

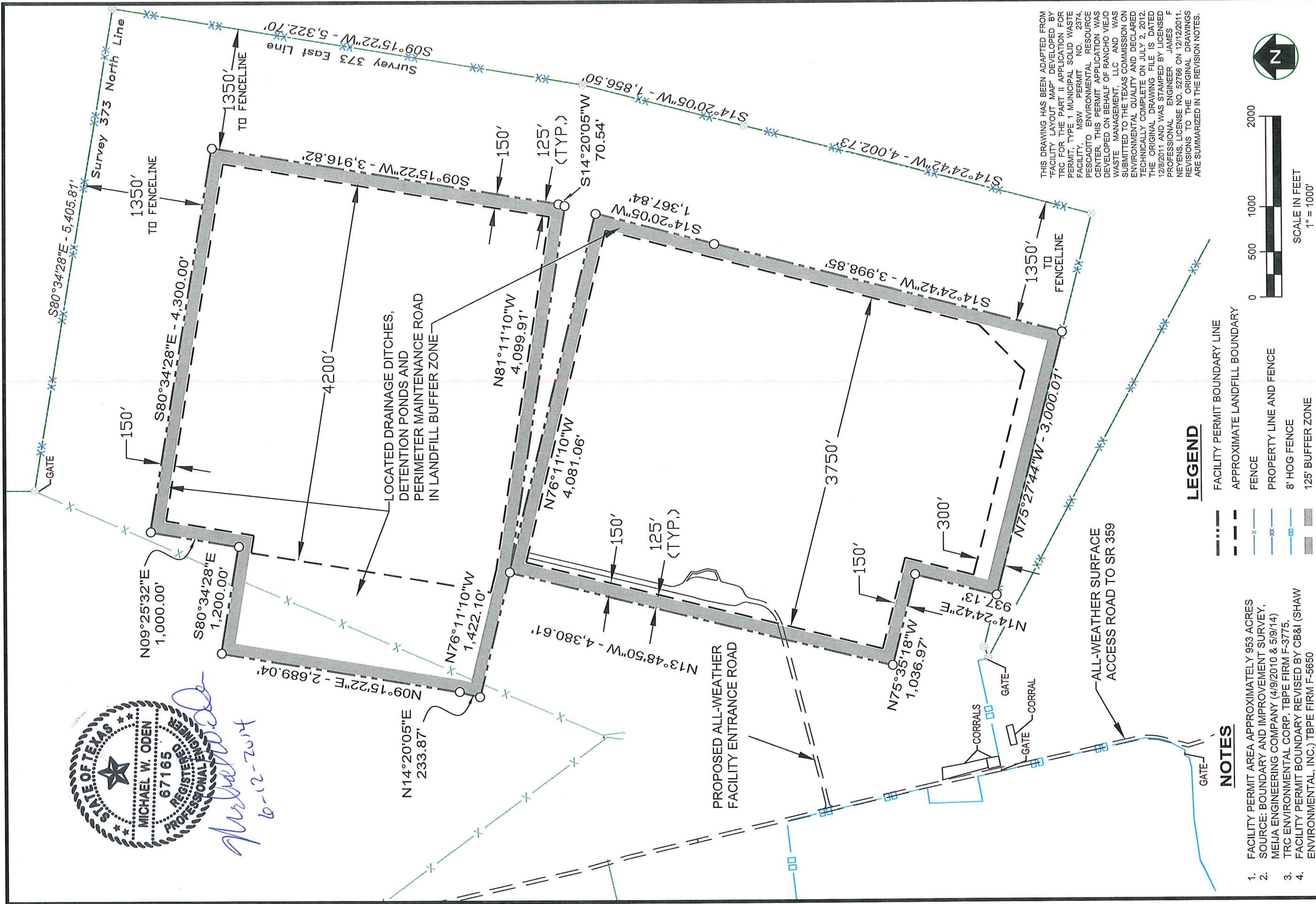
DRAWN BY: WCD	DATE	02/14/11	REVISED
---------------	------	----------	---------

TRC 505 EAST HUNTLAND DRIVE
SUITE 250
AUSTIN, TEXAS 78752
(512) 329-6080

FIGURE 2
PART II
PAGE XX



Michael W. Oden
10-12-2014



THIS DRAWING HAS BEEN ADAPTED FROM "FACILITY LAYOUT MAP" DEVELOPED BY TRC FOR THE PART II APPLICATION FOR PERMIT, TYPE 1 MUNICIPAL SOLID WASTE FACILITY, MSW PERMIT NO. 2374, PISCADITO ENVIRONMENTAL RESOURCE CENTER. THIS PERMIT APPLICATION WAS DEVELOPED ON BEHALF OF RANCHO VIEJO WASTE MANAGEMENT, LLC AND WAS SUBMITTED TO THE TEXAS COMMISSION ON ENVIRONMENTAL QUALITY AND DECLARED TECHNICALLY COMPLETE ON JULY 2, 2012. THE ORIGINAL DRAWING FILE IS DATED 12/8/2011 AND WAS STAMPED BY LICENSED PROFESSIONAL ENGINEER JAMES F. NEYENS, LICENSE NO. 52766 ON 12/12/2011. REVISIONS TO THE ORIGINAL DRAWINGS ARE SUMMARIZED IN THE REVISION NOTES.

LEGEND

- FACILITY PERMIT BOUNDARY LINE
- APPROXIMATE LANDFILL BOUNDARY
- FENCE
- PROPERTY LINE AND FENCE
- 8' HOG FENCE
- 125' BUFFER ZONE

NOTES

1. FACILITY PERMIT AREA APPROXIMATELY 953 ACRES
2. SOURCE: BOUNDARY AND IMPROVEMENT SURVEY, MEIJA ENGINEERING COMPANY (4/9/2010 & 5/9/14)
3. TRC ENVIRONMENTAL CORP. TBPE FIRM F-3775.
4. FACILITY PERMIT BOUNDARY REVISED BY CB&I (SHAW ENVIRONMENTAL, INC.) TBPE FIRM F-5650

CB&I Environmental & Infrastructure, Inc.
12005 FORD RD, SUITE 600
DALLAS, TEXAS 75234
(972) 775-9400

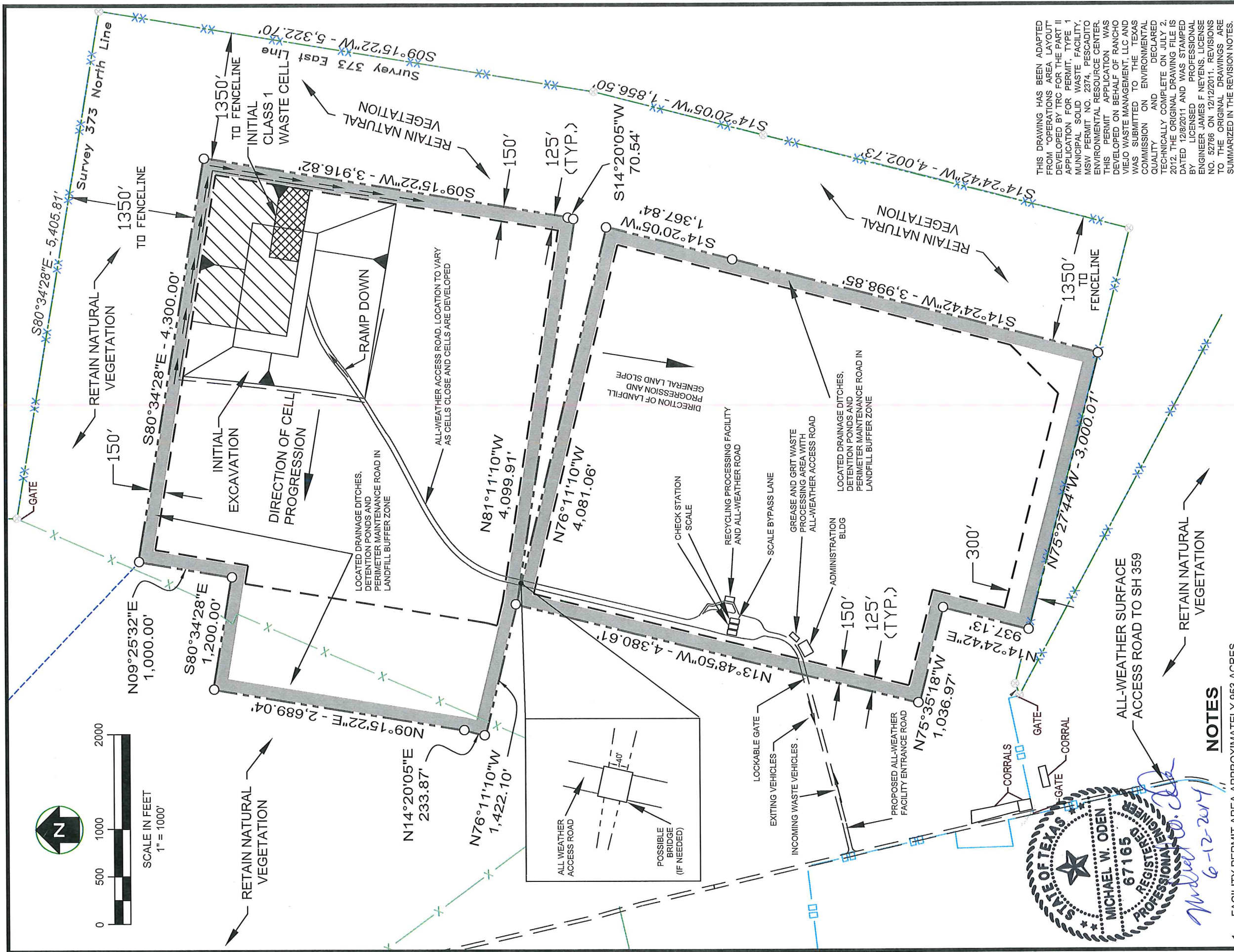


CB&I Environmental and Infrastructure, Inc. has prepared this document for a specific project or purpose. All information contained within this document is copyrighted and remains the sole property of CB&I Environmental and Infrastructure, Inc. No part of this document may be reproduced, stored in a retrieval system, or transmitted in any form or by any means, electronic, mechanical, photocopying, recording, or by any information storage and retrieval system, without prior written permission from CB&I Environmental and Infrastructure, Inc.

PESCADITO ENVIRONMENTAL RESOURCE CENTER WEBB COUNTY, TEXAS








FIGURE 3 - PART II FACILITY LAYOUT MAP

DRAWN BY: MTE APPROVED BY: MWO PROJ. NO.: 148866 DATE: MAY 2014



THIS DRAWING HAS BEEN ADAPTED FROM "OPERATIONS AREA LAYOUT" DEVELOPED BY TRC FOR THE PART II APPLICATION FOR PERMIT, TYPE 1, MUNICIPAL SOLID WASTE FACILITY, MSW PERMIT NO. 2374, PESCADITO ENVIRONMENTAL RESOURCE CENTER. THIS PERMIT APPLICATION WAS DEVELOPED ON BEHALF OF RANCHO VIEVIEJO WASTE MANAGEMENT, LLC AND WAS SUBMITTED TO THE TEXAS COMMISSION ON ENVIRONMENTAL QUALITY AND DECLARED TECHNICALLY COMPLETE ON JULY 2, 2012. THE ORIGINAL DRAWING FILE IS DATED 12/8/2011 AND WAS STAMPED BY LICENSED PROFESSIONAL ENGINEER JAMES F. NEVENS, LICENSE NO. 52766 ON 12/12/2011. REVISIONS TO THE ORIGINAL DRAWINGS ARE SUMMARIZED IN THE REVISION NOTES.

LEGEND

-  FACILITY PERMIT BOUNDARY LINE & ACCESS CONTROL FENCE
 APPROXIMATE LANDFILL BOUNDARY
 CONSTRUCTED LINER AND LEACHATE COLLECTION SYSTEM
 RUN-ON AND RUN-OFF CONTROL BERM
 DRAINAGE STRUCTURE
 FENCE
 125' BUFFER ZONE

NOTES

1. FACILITY PERMIT AREA APPROXIMATELY 953 ACRES
2. SOURCE: BOUNDARY AND IMPROVEMENT SURVEY, MEIJA ENGINEERING COMPANY (4/9/2010 & 5/9/14)
3. ACTUAL SIZE OF LANDFILL EXCAVATION TO BE DETERMINED BY INCOMING WASTE QUANTITY.
4. SOME FACILITIES MAY BE SHOWN LARGER THAN TRUE SCALE FOR CLARITY
5. CONSTRUCT PERIMETER FENCE AND LOCKABLE GATES AT FACILITY PERMIT BOUNDARY TO SURROUND FACILITY.
6. NATURAL VEGETATION WILL BE RETAINED FOR AT LEAST 1/4 MILE IN ALL DIRECTIONS FOR VISUAL SCREEN, WINDBREAK, AND WIND-BLOWN LITTER CONTROL
7. TRC ENVIRONMENTAL CORP. TBPE FIRM F-3775.
8. FACILITY PERMIT BOUNDARY REVISED BY CB&I (SHAW ENVIRONMENTAL, INC) TBPE FIRM F-5650

**CB&I Environmental
& Infrastructure, Inc.**



CB&I Environmental and Infrastructure, Inc. has prepared this document for a specific project or purpose. All information contained within this document is copyrighted and remains intellectual property of CB&I Environmental and Infrastructure, Inc. This document may not be used or copied, in part or in whole, for any reason without expressed written consent by CB&I Environmental and Infrastructure, Inc.

**PESCADITO ENVIRONMENTAL RESOURCE CENTER
WEBB COUNTY, TEXAS**

**FIGURE 4 - PART II
OPERATIONS AREA LAYOUT**

DRAWN BY:

ROVED BY:

PROJ. NO.:

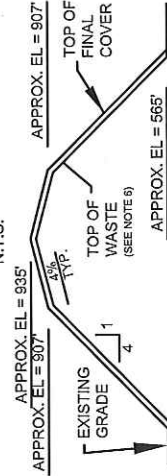
DATE:

LOCATE DRAINAGE DITCHES,
DETENTION PONDS AND
PERIMETER MAINTENANCE ROAD
IN LANDFILL BUFFER ZONE

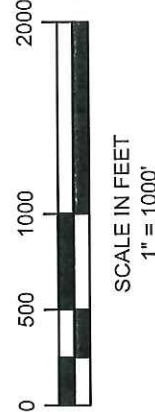
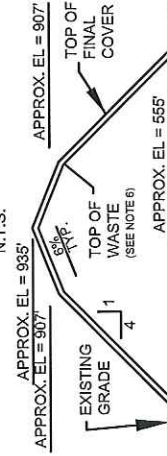


N14°20'05"E
233.87'

SECTION A - A
N.T.S.



SECTION B - B
N.T.S.



NOTES

1. FACILITY PERMIT AREA APPROXIMATELY 953 ACRES.
2. SOURCE: BOUNDARY AND IMPROVEMENT SURVEY, MEJIA ENGINEERING COMPANY (4/9/10 & 5/9/14).
3. CONSTRUCT SECURITY FENCE AND GATES ALONG FACILITY PERMIT BOUNDARY.
4. TRC ENVIRONMENTAL CORP., TBPE FIRM F-3775.
5. FACILITY PERMIT BOUNDARY REVISED BY CB&I (SHAW ENVIRONMENTAL, INC.) TBPE FIRM F-5650
6. LANDFILL ELEVATIONS ARE PRELIMINARY FOR TOP OF FINAL COVER. SUBTRACT 2.5' FOR TOP OF WASTE ELEVATION.



- LEGEND**
- LANDFILL CELL DESIGNATION
- GROUNDWATER MONITORING ZONE LOCATION
 - LANDFILL GAS MONITORING ZONE LOCATION
 - TYP. LANDFILL CELL BOUNDARY
 - FACILITY PERMIT BOUNDARY LINE
 - APPROXIMATE LANDFILL LIMIT
 - FENCE
 - PROPERTY LINE AND FENCE
 - 8' HOG FENCE

THIS DRAWING HAS BEEN ADAPTED FROM "GENERAL LOCATION MAP" DEVELOPED BY TRC FOR THE PART 1 APPLICATION FOR PERMIT, TYPE 1 MUNICIPAL SOLID WASTE FACILITY, MSW PERMIT NO. 2374. PESCADITO ENVIRONMENTAL RESOURCE CENTER. THIS PERMIT APPLICATION WAS DEVELOPED ON BEHALF OF RANCHO VIEJO WASTE MANAGEMENT, LLC AND WAS SUBMITTED TO THE TEXAS COMMISSION ON ENVIRONMENTAL QUALITY AND DECLARED TECHNICALLY COMPLETE ON JULY 2, 2012. THE ORIGINAL DRAWING FILE IS DATED 2/14/2011 AND WAS STAMPED BY LICENSED PROFESSIONAL ENGINEER JAMES F. NEVENS, LICENSE NO. 52766 ON 9/14/2011. REVISIONS TO THE ORIGINAL DRAWINGS ARE SUMMARIZED IN THE REVISION NOTES.



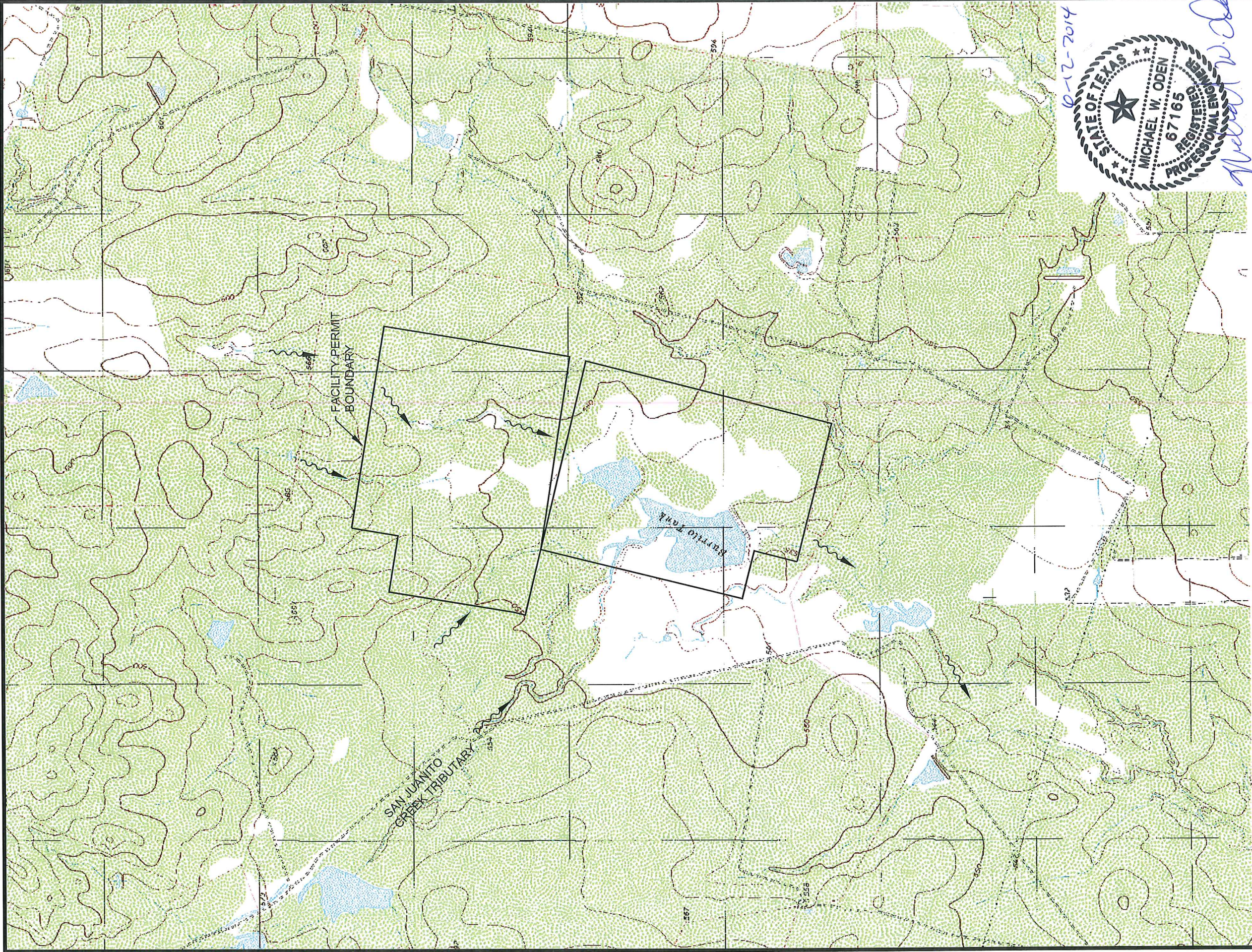
**CB&I Environmental
& Infrastructure, Inc.**
12005 FORD RD, SUITE 600
DALLAS, TEXAS 75234
(972) 773-9400

CB&I Environmental and Infrastructure, Inc. has prepared this document for a specific project or purpose. All information contained within this document is copyrighted and remains the intellectual property of CB&I Environmental and Infrastructure, Inc. This document shall not be used for any other project without the written consent of CB&I Environmental and Infrastructure, Inc.

PESCADITO ENVIRONMENTAL RESOURCE CENTER WEBB COUNTY, TEXAS

**FIGURE 5 - PART 2
MONITORING SYSTEM AND CELL LAYOUT PLAN**

DRAWN BY:	MTE	APPROVED BY:	MWO	PROJ. NO.:	148866	DATE:	MAY 2014
-----------	-----	--------------	-----	------------	--------	-------	----------



NOTES

1. FLOW DIRECTION INDICATED BY ARROWS
2. NO NAMED STREAMS SHOWN ON MAP
3. BASE MAP BY TRC ENVIRONMENTAL CORP. TBPE FIRM F-3775.
4. FACILITY PERMIT BOUNDARY REVISED BY CB&I (SHAW ENVIRONMENTAL, INC.) TBPE FIRM F-5650

THIS DRAWING HAS BEEN ADAPTED FROM "GENERAL TOPOGRAPHIC MAP" DEVELOPED BY TRC FOR THE PART 1 APPLICATION FOR PERMIT, TYPE 1 MUNICIPAL SOLID WASTE FACILITY, MSW PERMIT NO. 2374, PESCADITO ENVIRONMENTAL RESOURCE CENTER. THIS PERMIT APPLICATION WAS DEVELOPED ON BEHALF OF RANCHO VIEJO WASTE MANAGEMENT, LLC AND WAS SUBMITTED TO THE TEXAS COMMISSION ON ENVIRONMENTAL QUALITY AND DECLARED TECHNICALLY COMPLETE ON JULY 2, 2012. THE ORIGINAL DRAWING FILE IS DATED 2/14/2011 AND WAS STAMPED BY LICENSED PROFESSIONAL ENGINEER JAMES F. NEYENS, LICENSE NO. 52766 ON 9/14/2011. REVISIONS TO THE ORIGINAL DRAWINGS ARE SUMMARIZED IN THE REVISION NOTES.



SCALE IN FEET
1" = 2000'



U.S.G.S. 7.5-MINUTE SERIES TOPOGRAPHIC MAP, BURRITO TANK (1980), TEXAS.

REV. 1 5/22/14 - REVISED FACILITY PERMIT BOUNDARY



**CB&I Environmental
& Infrastructure, Inc.**
12005 FORD RD., SUITE 600
DALLAS, TEXAS 75234
(972) 773-5460

CB&I Environmental and Infrastructure, Inc. has prepared this document for a specific project or purpose. All information contained within this document is copyrighted and remains the exclusive property of CB&I Environmental and Infrastructure, Inc. No part of this document may be reproduced, stored in a retrieval system, or transmitted in any form or by any means, electronic, mechanical, photocopying, recording, or by any information storage and retrieval system, without the prior written consent of CB&I Environmental and Infrastructure, Inc.

PESCADITO ENVIRONMENTAL RESOURCE CENTER WEBB COUNTY, TEXAS

FIGURE 6 - PART II GENERAL TOPOGRAPHIC MAP

DRAWN BY: MTE APPROVED BY: MWO PROJ. NO.: 148866 DATE: MAY 2014

Technically Complete, March 11, 2016



NOTES

1. BASE MAP BY TRC ENVIRONMENTAL CORP. TBPE FIRM F-3775.
2. FACILITY PERMIT BOUNDARY REVISED BY CB&I (SHAW ENVIRONMENTAL, INC.) TBPE FIRM F-5650

SOURCE: TEXAS ORTHOIMAGERY PROGRAM (TOP), 2008.

THIS DRAWING HAS BEEN ADAPTED FROM "AERIAL PHOTOGRAPH" DEVELOPED BY TRC FOR THE PART II APPLICATION FOR PERMIT. TYPE 1. MUNICIPAL SOLID WASTE FACILITY, MSW PERMIT NO. 2374, PESCADITO ENVIRONMENTAL RESOURCE CENTER. THIS PERMIT APPLICATION WAS DEVELOPED ON BEHALF OF RANCHO VIEJO WASTE MANAGEMENT, LLC AND WAS SUBMITTED TO THE TEXAS COMMISSION ON ENVIRONMENTAL QUALITY AND DECLARED "TECHNICALLY COMPLETE" ON JULY 2, 2012. THE ORIGINAL DRAWING FILE IS DATED 12/8/2011 AND WAS STAMPED BY LICENSED PROFESSIONAL ENGINEER JAMES F. NEYENS, LICENSE NO. 92766 ON 12/12/2011. REVISIONS TO THE ORIGINAL DRAWINGS ARE SUMMARIZED IN THE REVISION NOTES.



SCALE IN FEET
1" = 2000'



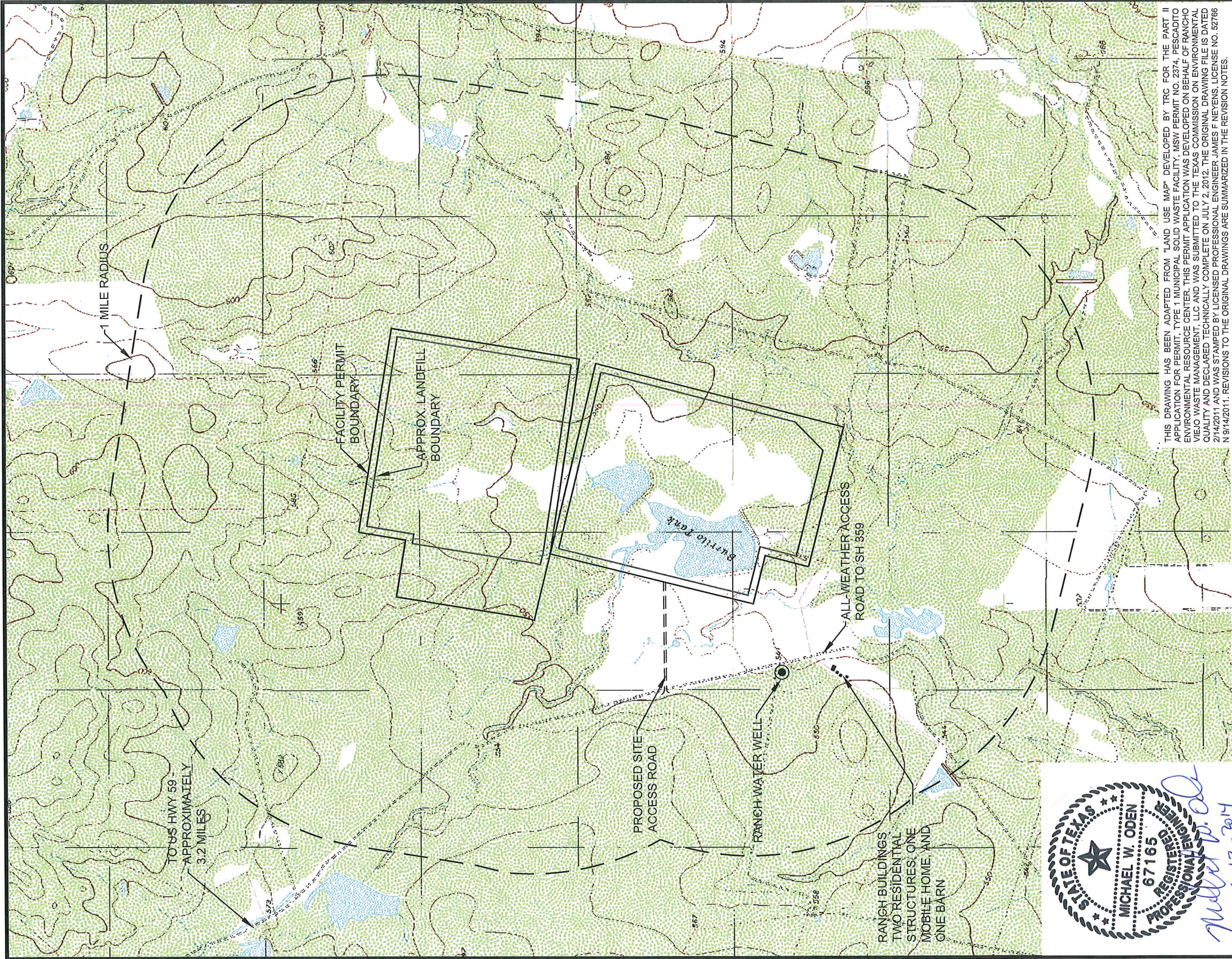
CB&I Environmental
& Infrastructure, Inc.
12005 FORD RD, SUITE 600
DALLAS, TEXAS 75224
(972) 775-5400

CB&I Environmental and Infrastructure, Inc. has prepared this document for a specific project or purpose. All information contained within this document is copyrighted and remains intellectual property of CB&I Environmental and Infrastructure, Inc. This document may not be used, copied, reproduced, or otherwise disseminated without the written consent of CB&I Environmental and Infrastructure, Inc.

PESCADITO ENVIRONMENTAL RESOURCE CENTER WEBB COUNTY, TEXAS

FIGURE 7 - PART II AERIAL PHOTOGRAPH

DRAWN BY:	MTE	APPROVED BY:	MWO	PROJ. NO.:	148866	DATE:	MAY 2014
-----------	-----	--------------	-----	------------	--------	-------	----------



NOTES

1. BASE MAP BY TRC ENVIRONMENTAL CORP. TBPE FIRM F-3775.
2. FACILITY PERMIT BOUNDARY REVISED BY CB&I (SHAW ENVIRONMENTAL, INC.) TBPE FIRM F-6650
3. 100 PERCENT OF LAND USE AT AND WITHIN 1 MILE OF PROPOSED FACILITY IS CATTLE RANCHING INTERMIXED WITH OIL AND GAS PRODUCTION.
4. TWO RESIDENTIAL STRUCTURES & ONE MOBILE HOME FOR RANCH PERSONNEL ARE LOCATED WITHIN ONE MILE.
5. THERE ARE NO COMMERCIAL ESTABLISHMENTS, SCHOOLS, LICENSED DAY CARE FACILITIES, CHURCHES, CEMETARIES, OR RECREATIONAL AREAS WITHIN ONE MILE.
6. ALL PONDS OR LAKES ARE MAN-MADE LIVESTOCK WATERING TANKS.
7. EASEMENTS SHOWN ON FIGURE 4, SHEETS 1 & 2, PART I

LEGEND

- WATER WELL (NONE WITHIN 500')
- STRUCTURE OR INHABITABLE BUILDING
- POND OR LAKE

SCALE IN FEET
1" = 2000'

SOURCE
U.S.G.S. 7.5-MINUTE SERIES TOPOGRAPHIC MAP, BURRITO TANK (1980), TEXAS.



PESCADITO ENVIRONMENTAL RESOURCE CENTER WEBB COUNTY, TEXAS

FIGURE 8 - PART II LAND USE MAP

DRAWN BY: MTE APPROVED BY: MWO PROJ. NO.: 148866 DATE: MAY 2014



SCALE IN FEET
1" = 3000'

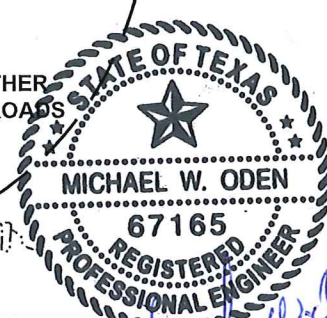
LEGEND

- FACILITY PERMIT BOUNDARY LINE
- PROPERTY BOUNDARY (FENCE LINE)
- FACILITY ACCESS ROAD EASEMENT
- ALL-WEATHER ACCESS ROAD
- DIRT ROAD
- OHPL --- OVERHEAD ELECTRICAL POWER LINE
- 8' HOG FENCE LINE
- 4' HOG FENCE LINE
- 4" BARB WIRE FENCE LINE
- DUAL FENCE LINE
- POND
- FOUND FENCE CORNER
- SET 1/2" IRON ROD
- ◆ BENCHMARK
- ⊙ POWER POLE

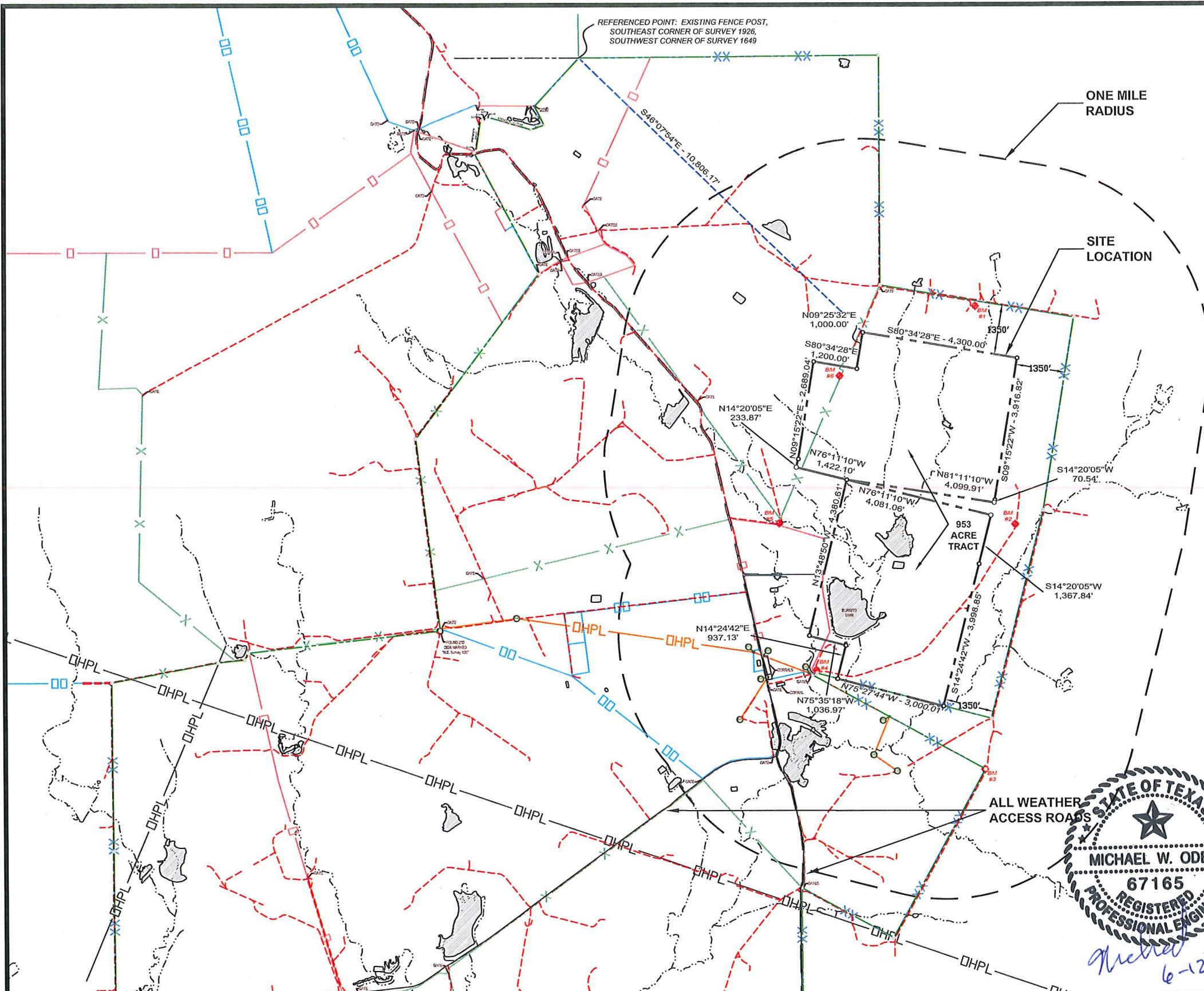
NOTES

- SOURCE: BOUNDARY AND IMPROVEMENT SURVEY MEIJA ENGINEERING COMPANY (8/15/11 & 5/9/14)
- WELLS SHOWN INCLUDE ACTIVE AND ABANDONED OIL AND GAS WELLS
- TRC ENVIRONMENTAL CORP. TBPE FIRM F-3775
- FACILITY PERMIT BOUNDARY REVISED BY CB&I (SHAW ENVIRONMENTAL, INC.) TBPE FIRM F-5650

THIS DRAWING HAS BEEN ADAPTED FROM "SUPPLEMENTAL LAND USE MAP" DEVELOPED BY TRC FOR THE PART II APPLICATION FOR PERMIT, TYPE 1 MUNICIPAL SOLID WASTE FACILITY, MSW PERMIT NO. 2374, PESCADITO ENVIRONMENTAL RESOURCE CENTER. THIS PERMIT APPLICATION WAS DEVELOPED ON BEHALF OF RANCHO VIEJO WASTE MANAGEMENT, LLC AND WAS SUBMITTED TO THE TEXAS COMMISSION ON ENVIRONMENTAL QUALITY AND DECLARED TECHNICALLY COMPLETE ON JULY 2, 2012. THE ORIGINAL DRAWING FILE IS DATED 2/14/2011 AND WAS STAMPED BY LICENSED PROFESSIONAL ENGINEER JAMES F. NEYENS, LICENSE NO. 52766 ON 9/13/2011. REVISIONS TO THE ORIGINAL DRAWINGS ARE SUMMARIZED IN THE REVISION NOTES.



Michael W. Oden
6-12-2014



1	5/22/2014	REVISED FACILITY PERMIT BOUNDARY
REV. NO.	DATE	DESCRIPTION



CB&I Environmental & Infrastructure, Inc.

12005 FORD RD, SUITE 600
DALLAS, TEXAS 75234
(972) 773-8400

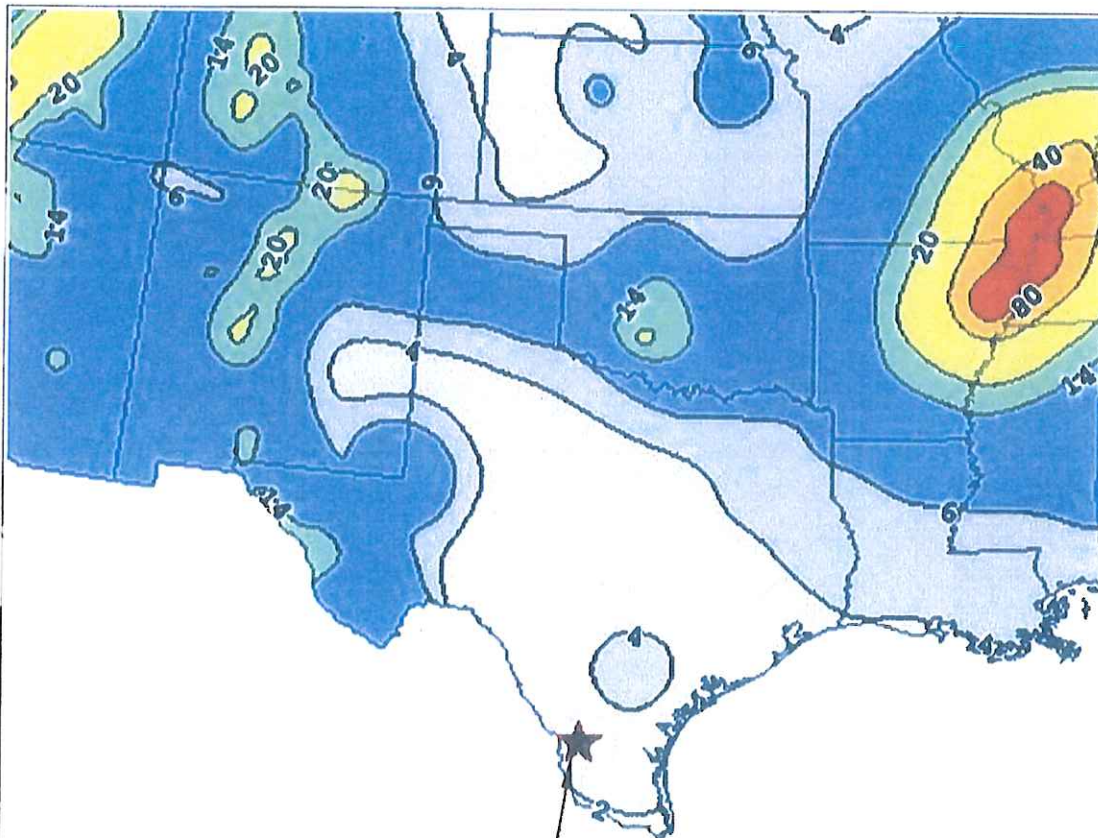
CB&I Environmental and Infrastructure, Inc. has prepared this document for a specific project or purpose. All information contained within this document is copyrighted and remains intellectual property of CB&I Environmental and Infrastructure, Inc. This document may not be used or copied, in part or in whole, for any reason without expressed written consent by CB&I Environmental and Infrastructure, Inc.

**PESCADITO ENVIRONMENTAL RESOURCE CENTER
WEBB COUNTY, TEXAS**

**FIGURE 9 - PART II
SUPPLEMENTAL LAND USE MAP**

DRAWN BY: MTE APPROVED BY: MWO PROJ. NO.: 148866 DATE: MAY 2014

225 112.5 0 225 450
 APPROX. SCALE : 1" = 225 MILES



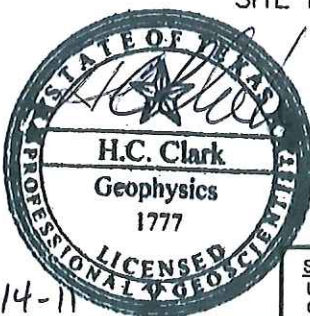
- Legend**
- %g contour labels
 - %g contours
 - States
 - %g intervals
 - > 80
 - 40-80
 - 20-40
 - 14-20
 - 8-14
 - 4-8
 - 2-4
 - 0-2

★ SITE LOCATION

0 178km

Peak Horizontal Acceleration with 2% Probability of Exceedance in 50 Years

SITE LOCATION



SOURCE
 USGS EARTHQUAKE HAZARDS PROGRAM, 2008
 COTERMINOUS US, INTERACTIVE VERSION

USGS SEISMIC HAZARD MAP

PESCADITO ENVIRONMENTAL RESOURCE CENTER
 MSW PERMIT NO. 2374
 WEBB COUNTY, TEXAS

PROJECT NO. 182277 DWG FILE 170401-MSW-II-12 (USGS)
 DRAWN BY: WCD DATE 09/14/11 REVISED

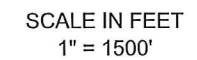


505 EAST HUNTLAND DRIVE
 SUITE 250
 AUSTIN, TEXAS 78752
 (512) 328-6080

FIGURE
 10

PART II
 PAGE XX

9-14-11



	FACILITY PERMIT BOUNDARY LINE
	PROPERTY BOUNDARY (FENCE LINE)
	FACILITY ACCESS ROAD EASEMENT
	100 YR FLOOD ZONE A LIMITS
	DIRT ROAD
	OVERHEAD ELECTRICAL POWER LINE
	8' HOG FENCE LINE
	4' HOG FENCE LINE
	4" BARB WIRE FENCE LINE
	DUAL FENCE LINE
	POND
	FOUND FENCE CORNER
	SET 1/2" IRON ROD
	BENCHMARK
	POWER POLE

1. SOURCE: BOUNDARY AND IMPROVEMENT SURVEY, MEJIA ENGINEERING COMPANY (8/15/2011 & 5/9/2014).
2. BY GRAPHICAL PLOTTING ONLY, PARTS OF THIS TRACT ARE LOCATED WITHIN ZONE A AS DEFINED BY THE FEMA FLOOD INSURANCE RATE MAP, COMMUNITY PANEL NO. 48479C1275C WITH AN EFFECTIVE DATE OF APRIL 2, 2008
3. TRC ENVIRONMENTAL CORP. TBPE FIRM F-3775.
4. FACILITY PERMIT BOUNDARY REVISED BY CB&I (SHAW ENVIRONMENTAL, INC.) TBPE FIRM F-5650
5. CLOMR SUBMITTED TO FEMA TO REMOVE THE 100-YEAR FLOODPLAIN FROM THE PERMIT BOUNDARY

12,193.84 Acre Tract
depicted as Tract 2 on a Survey Plat on a
Stipulation Conforming Surface Ownership, Agreed
Boundary Line and Roadway Access Instrument
recorded in v. 704, p. 827-852, R.P.R.W.C.T.

1	5/22/2014	REVISED FACILITY PERMIT BOUNDARY
REV. NO.	DATE	DESCRIPTION



12005 FORD RD, SUITE 600
DALLAS, TEXAS 75234
(972) 773-8400

CB&I Environmental and Infrastructure, Inc. has prepared this document for a specific project or purpose. All information contained within this document is copyrighted and remains intellectual property of CB&I Environmental and Infrastructure, Inc. This document may not be used or copied, in part or in whole, for any reason without expressed written consent by CB&I Environmental and Infrastructure, Inc.

**FIGURE 11 - PART II
FLOOD INSURANCE RATE MAP**

DRAWN BY:	MTE	APPROVED BY:	MWO	PROJ. NO.:	148866	DATE:	MAY 2014
-----------	-----	--------------	-----	------------	--------	-------	----------