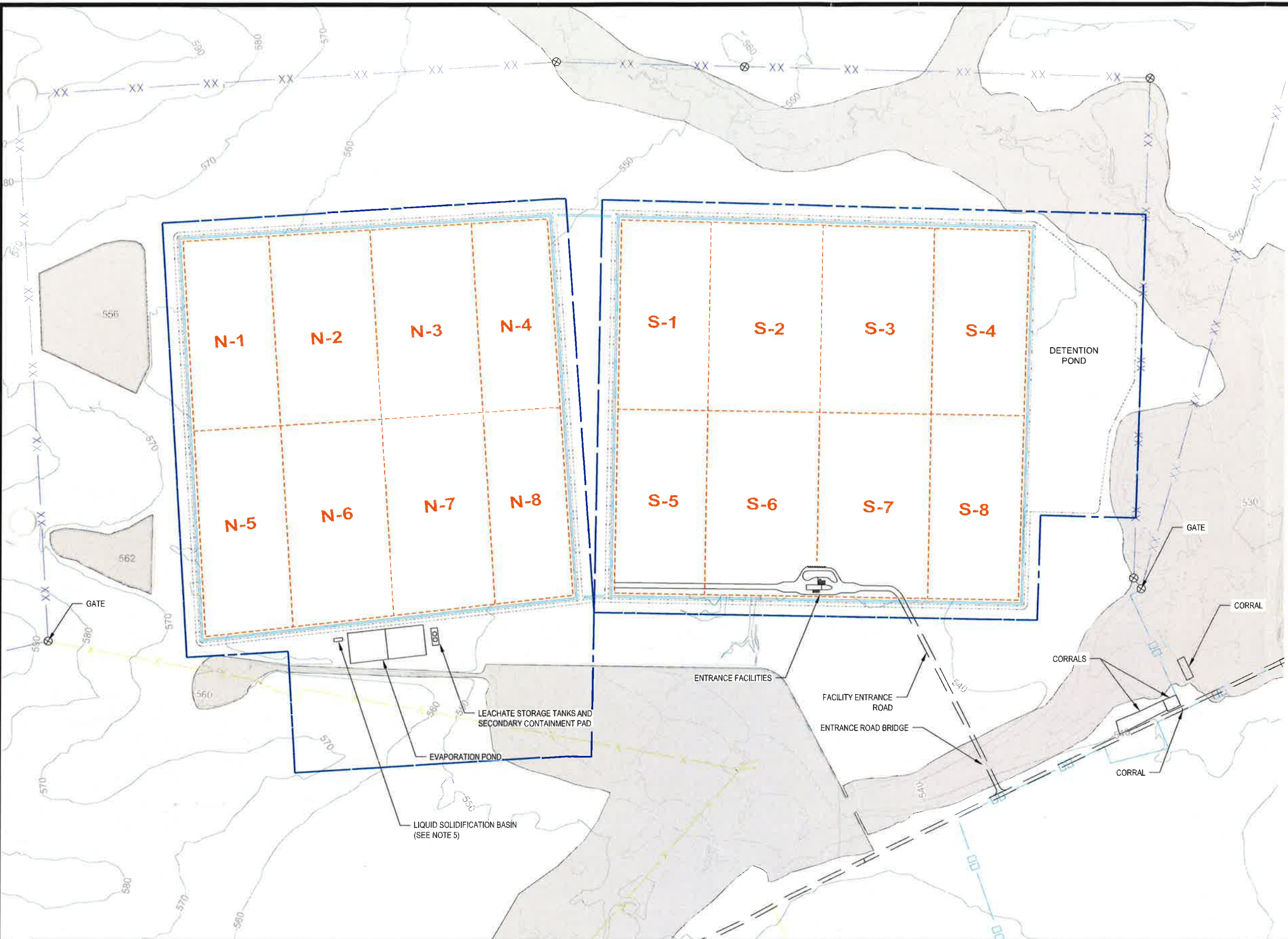


**Part III**

**Attachment III-D**

**Appendix III-D.1**

**No Redline Version for Title Page or TOC - Not previously  
provided**



**LEGEND**

- PERMIT BOUNDARY
- WASTE UNIT BOUNDARY
- DETENTION BASIN
- PERIMETER STORMWATER DITCH
- PERIMETER ACCESS ROAD
- XX PROPERTY LINE AND FENCE
- FENCE
- 8' HOG FENCE
- CLOMR 100-YEAR FLOODPLAIN

**NOTES**

1. EXISTING CONTOURS DEVELOPED FROM SITE AERIAL TOPOGRAPHIC SURVEY BY DALLAS AERIAL SURVEYS ON FEBRUARY 15, 2010.
2. BOUNDARY AND IMPROVEMENT SURVEY DEVELOPED BY MEIJA ENGINEERING COMPANY ON AUGUST 15, 2011 AND JUNE 9, 2014.
3. FOR CLARITY, NOT ALL SITE FEATURES MAY BE SHOWN.
4. THE NEED FOR FLEXIBILITY TO ACCOMMODATE ADJUSTMENTS AND MODIFICATIONS IS ANTICIPATED CONSIDERING THE SIZE, COMPLEXITY, AND LIFE OF THE PROJECT.
5. LIQUID SOLIDIFICATION BASIN MAY BE IN THIS LOCATION OR IN AREAS WHERE WASTE HAS BEEN PLACED. REFER TO DRAWING III-B.1-7 FOR SOLIDIFICATION BASIN DETAIL.
6. ALL FACILITIES MAY NOT BE CONSTRUCTED AT THE SAME TIME.
7. ENTRANCE FACILITIES TO BE RELOCATED OR WASTE UNITS MODIFIED TO REDUCE AREA AT TIME OF COMPLETING CELLS S-5 TO S-8.
8. ALL CELLS ARE DESIGNATED TO RECEIVE CLASS 1 WASTE. EACH CELL HAS A DEDICATED LEACHATE COLLECTION AND REMOVAL SYSTEM.

REV. NO.	DATE	DESCRIPTION
1	9/2015	NOD 1

**CBI** CB&I Environmental & Infrastructure, Inc.  
 TBPE FIRM F-5650



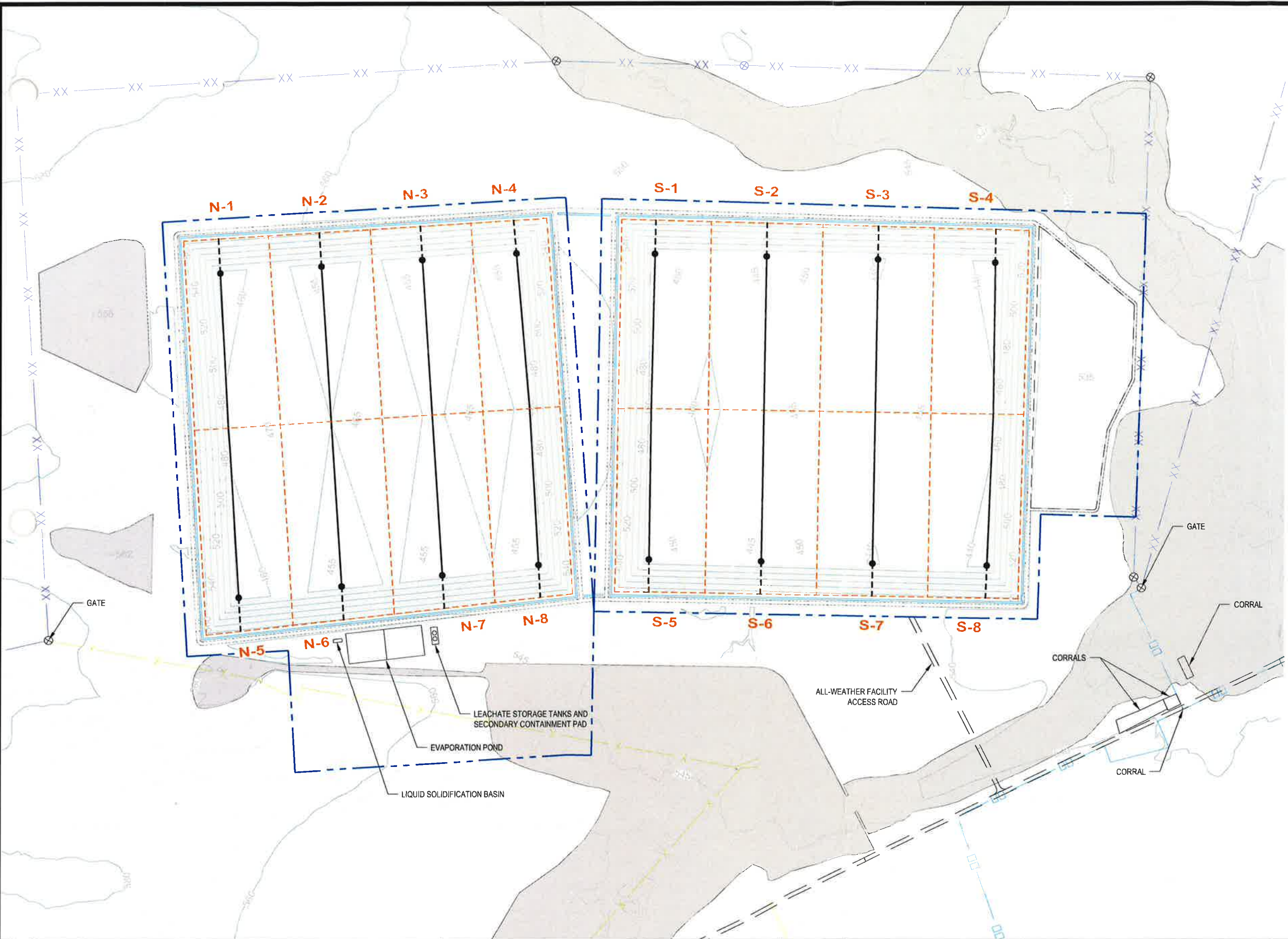
THIS DOCUMENT IS RELEASED FOR THE PURPOSE OF PERMITTING UNDER THE AUTHORITY OF MICHAEL W. ODEN, P.E. 67165.

**PESCADITO ENVIRONMENTAL RESOURCE CENTER  
 WEBB COUNTY, TEXAS  
 MSW 2374**

**SITE LAYOUT PLAN**

PROJ. NO.:	148866	DATE:	APRIL 2015
DESIGNED BY:	-	DRAWING NO.:	III D.1-2
DRAWN BY:	MTE		
CHECKED BY:	RDS		
APPROVED BY:	MWD		2 OF 6 SHEETS

CB&I Environmental and Infrastructure, Inc. has prepared this document for a specific project or purpose. All information contained within this document is copyrighted and remains intellectual property of CB&I Environmental and Infrastructure, Inc. This document may not be used or copied, in part or in whole, for any reason without expressed written consent by CB&I Environmental and Infrastructure, Inc.



**LEGEND**

- PERMIT BOUNDARY
- WASTE UNIT BOUNDARY
- DETENTION BASIN
- PERIMETER DITCH
- PERIMETER ACCESS ROAD
- XX PROPERTY LINE AND FENCE
- FENCE
- 8' HOG FENCE
- 500 EXCAVATION ELEVATION
- CLOMR 100-YEAR FLOODPLAIN
- LEACHATE COLLECTION PIPE
- LEACHATE SUMP LOCATION
- LEACHATE SUMP RISER PIPES

**NOTES**

1. EXISTING CONTOURS DEVELOPED FROM SITE AERIAL TOPOGRAPHIC SURVEY BY DALLAS AERIAL SURVEYS ON FEBRUARY 15, 2010.
2. BOUNDARY AND IMPROVEMENT SURVEY DEVELOPED BY MEIJA ENGINEERING COMPANY ON AUGUST 15, 2011 AND JUNE 9, 2014.
3. FOR CLARITY, NOT ALL SITE FEATURES MAY BE SHOWN.
4. THE NEED FOR FLEXIBILITY TO ACCOMMODATE ADJUSTMENTS AND MODIFICATIONS IS ANTICIPATED CONSIDERING THE SIZE, COMPLEXITY, AND LIFE OF THE PROJECT.
5. EXCAVATION CONTOURS SHOWN REPRESENT BOTTOM OF THE 3' LINER FOR CLASS I CELLS. CELLS TO RECEIVE ONLY MUNICIPAL SOLID WASTE MAY HAVE 2' LINER.
6. SEE SHEET III-D.3-1 FOR TOP OF LINER ELEVATIONS.
7. ALL CELLS ARE DESIGNATED TO RECEIVE CLASS 1 WASTE. EACH CELL HAS A DEDICATED LEACHATE COLLECTION AND REMOVAL SYSTEM.

REV. NO.	DATE	DESCRIPTION
1	9/2015	NOD 1

**CBI** CB&I Environmental & Infrastructure, Inc.  
 TBPE FIRM F-5650

CB&I Environmental and Infrastructure, Inc. has prepared this document for a specific project or purpose. All information contained within this document is copyrighted and remains the intellectual property of CB&I Environmental and Infrastructure, Inc. This document may not be used or copied, in part or in whole, for any reason without expressed written consent by CB&I Environmental and Infrastructure, Inc.

STATE OF TEXAS  
 REGISTERED PROFESSIONAL ENGINEER  
 MICHAEL W. ODEN  
 67165  
 P.E. 67165

THIS DOCUMENT IS RELEASED FOR THE PURPOSE OF PERMITTING UNDER THE AUTHORITY OF MICHAEL W. ODEN, P.E. 67165.

**PESCADITO ENVIRONMENTAL RESOURCE CENTER  
 WEBB COUNTY, TEXAS  
 MSW 2374**

**EXCAVATION PLAN**

PROJ. NO.:	148866	DATE:	APRIL 2015
DESIGNED BY:	-	DRAWING NO.:	<b>III D.1-3</b>
DRAWN BY:	MTE		
CHECKED BY:	RDS		
APPROVED BY:	MWO		3 OF 6 SHEETS