

Part III
Attachment III-B
Appendix III-B.1

GENERAL FACILITY DESIGN FIGURES

Pescadito Environmental Resource Center
MSW No. 2374
Webb County, Texas

PESCADITO
ENVIRONMENTAL RESOURCE CENTER

Initial Submittal March 2015
Revised September 2015

Prepared for:
Rancho Viejo Waste Management, LLC
1116 Calle del Norte
Laredo, TX 78041

Prepared by:
CB&I Environmental and
Infrastructure, Inc.



12005 Ford Rd, Suite 600
Dallas, TX 75234

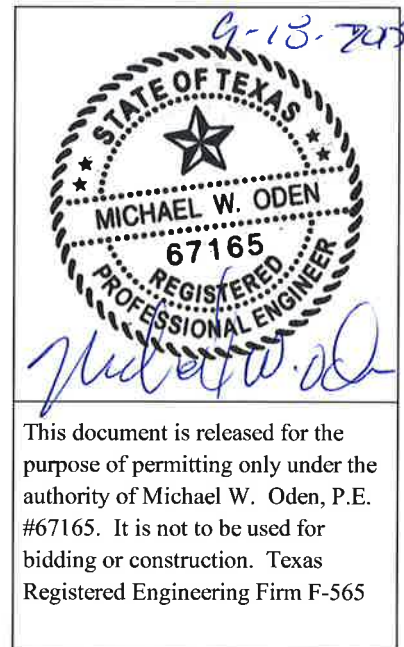



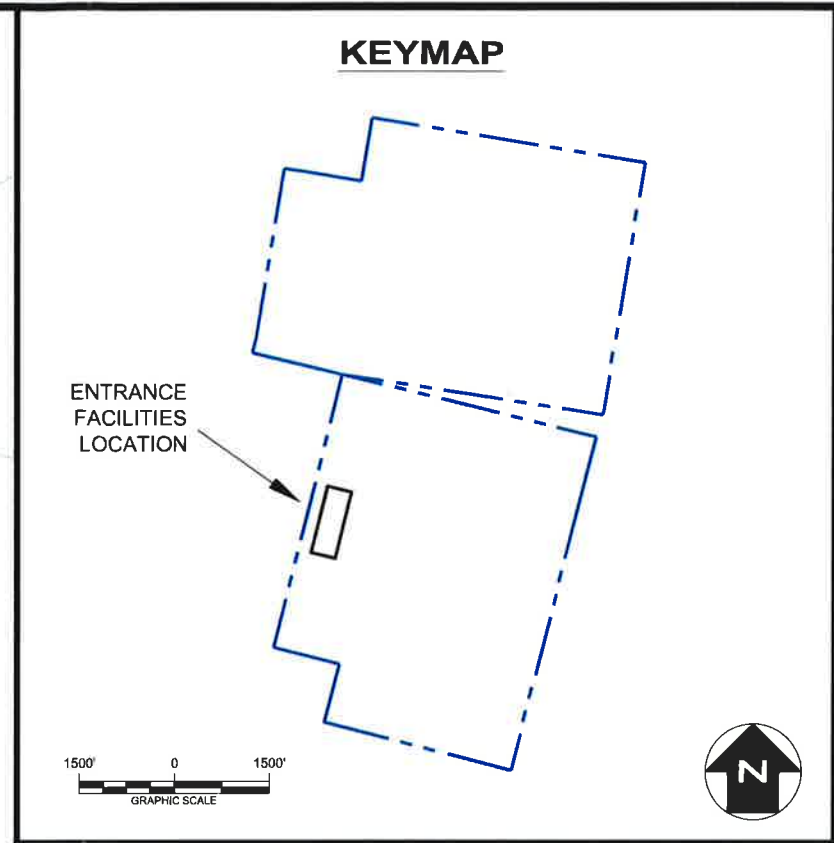
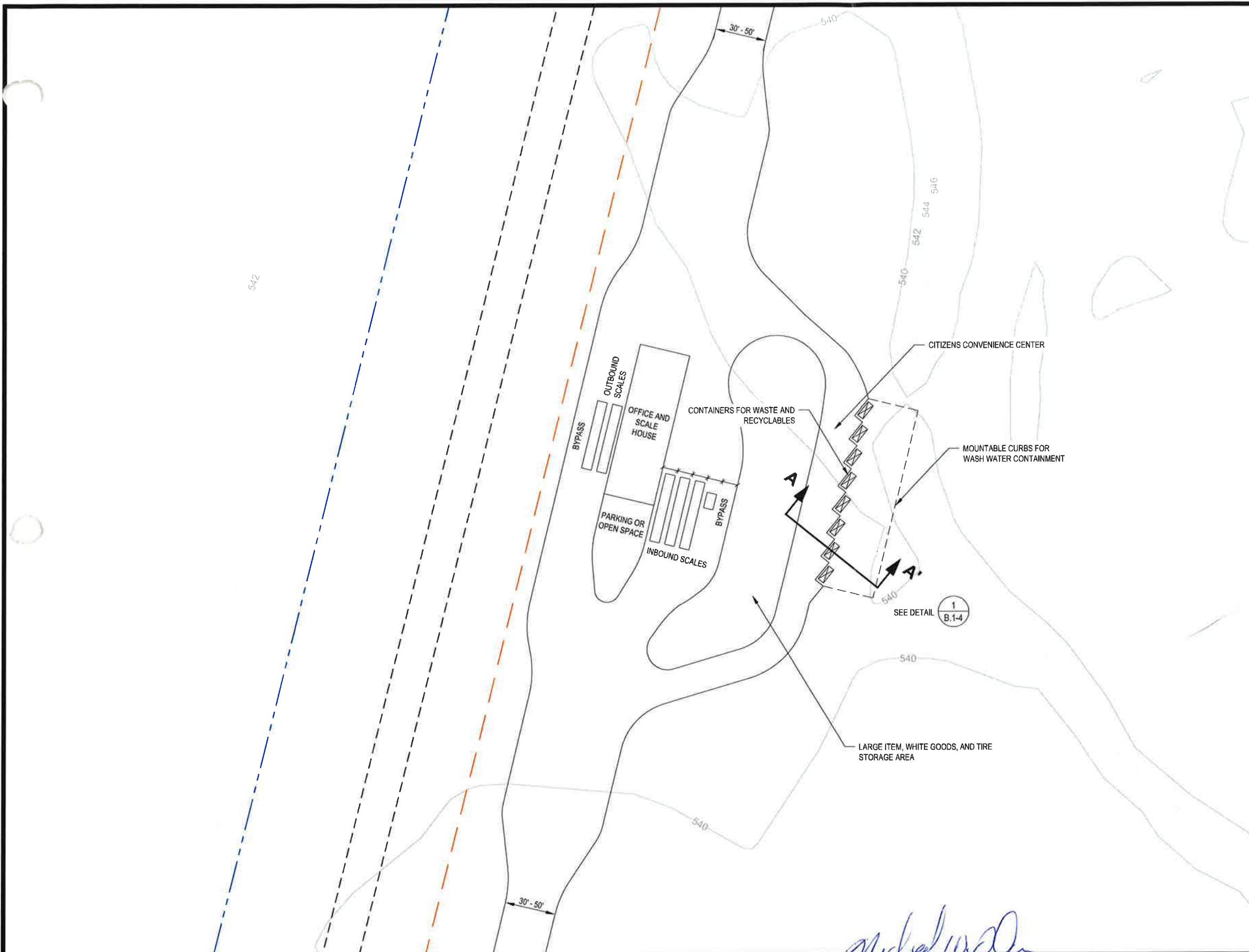
Table of Contents

III-B.1-1 Waste Flow Diagram	1
III-B.1-2 Waste Disposal, Processing and Storage Plan	2
III-B.1-3 Entrance Facilities	3
III-B.1-4 Convenience Center Details	4
III-B.1-5 Liquid Solidification Basin Plan and Details	5
III-B.1-6 Leachate Storage Details	6
III-B.1-7 Evaporation Pond Plan, Profiles and Details.....	7

9-18-2015

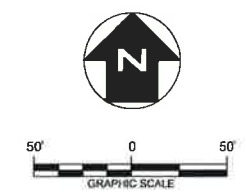


This document is released for the purpose of permitting only under the authority of Michael W. Oden, P.E. #67165. It is not to be used for bidding or construction. Texas Registered Engineering Firm F-565



- LEGEND**
- APPROXIMATE FACILITY BOUNDARY
 - APPROXIMATE EXISTING WASTE BOUNDARY
 - PERIMETER ROAD

- NOTES**
1. EXISTING CONTOURS DEVELOPED FROM SITE AERIAL TOPOGRAPHIC SURVEY BY DALLAS AERIAL SURVEYS ON FEBRUARY 15, 2010.
 2. FOR CLARITY, NOT ALL SITE FEATURES MAY BE SHOWN.
 3. ACTUAL DIMENSIONS, NUMBER OF SCALES, AND NUMBER OF CONTAINERS MAY CHANGE DEPENDING ON AMOUNT OF MATERIAL RECEIVED.



REV. NO.	DATE	DESCRIPTION
1	9/2015	NOD 1

CBI CB&I Environmental & Infrastructure, Inc.
 TBPE FIRM F-5650

CB&I Environmental and Infrastructure, Inc. has prepared this document for a specific project or purpose. All information contained within this document is copyrighted and remains the intellectual property of CB&I Environmental and Infrastructure, Inc. This document may not be used or copied, in part or in whole, for any reason without expressed written consent by CB&I Environmental and Infrastructure, Inc.

THIS DOCUMENT IS RELEASED FOR THE PURPOSE OF PERMITTING UNDER THE AUTHORITY OF MICHAEL W. ODEN, P.E. 67165.

Michael W. Oden

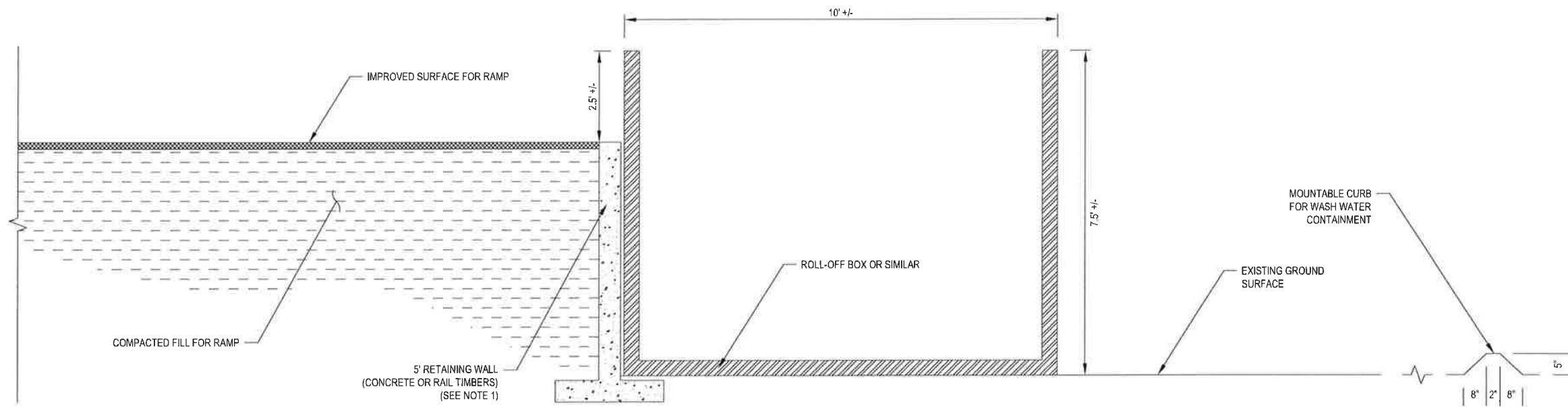
9-18-2015



PESCADITO ENVIRONMENTAL RESOURCE CENTER
WEBB COUNTY, TEXAS
MSW 2374

ENTRANCE FACILITIES

PROJ. NO.:	148866	DATE:	APRIL 2015
DESIGNED BY:	-	DRAWING NO.:	III
DRAWN BY:	APD		B.1-3
CHECKED BY:	RDS		
APPROVED BY:	MWO		3 OF 6 SHEETS



1
B.1-4

SECTION A-A'

NOT TO SCALE

NOTES

- CONTAINERS MAY BE INITIALLY SET ON EXISTING GROUND WITH NO RETAINING WALL OR COMPACTED FILL RAMP DEPENDING ON USE AND CONVENIENCE TO CUSTOMERS.

REV. NO.	DATE	DESCRIPTION
1	9/2015	NOD 1

CBI CB&I Environmental & Infrastructure, Inc.
TYPE FIRM F-5650

CB&I Environmental and Infrastructure, Inc. has prepared this document for a specific project or purpose. All information contained within this document is copyrighted and remains intellectual property of CB&I Environmental and Infrastructure, Inc. This document may not be used or copied, in part or in whole, for any reason without expressed written consent by CB&I Environmental and Infrastructure, Inc.

Michael W. Oden

STATE OF TEXAS
MICHAEL W. ODEN
67185
REGISTERED PROFESSIONAL ENGINEER

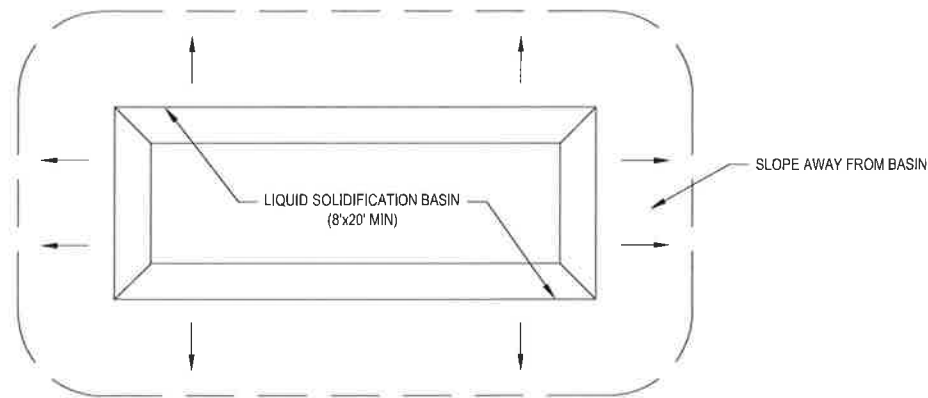
THIS DOCUMENT IS RELEASED FOR THE PURPOSE OF PERMITTING UNDER THE AUTHORITY OF MICHAEL W. ODEN, P.E. 67165.

9-18-2015

**PESCADITO ENVIRONMENTAL RESOURCE CENTER
WEBB COUNTY, TEXAS
MSW 2374**

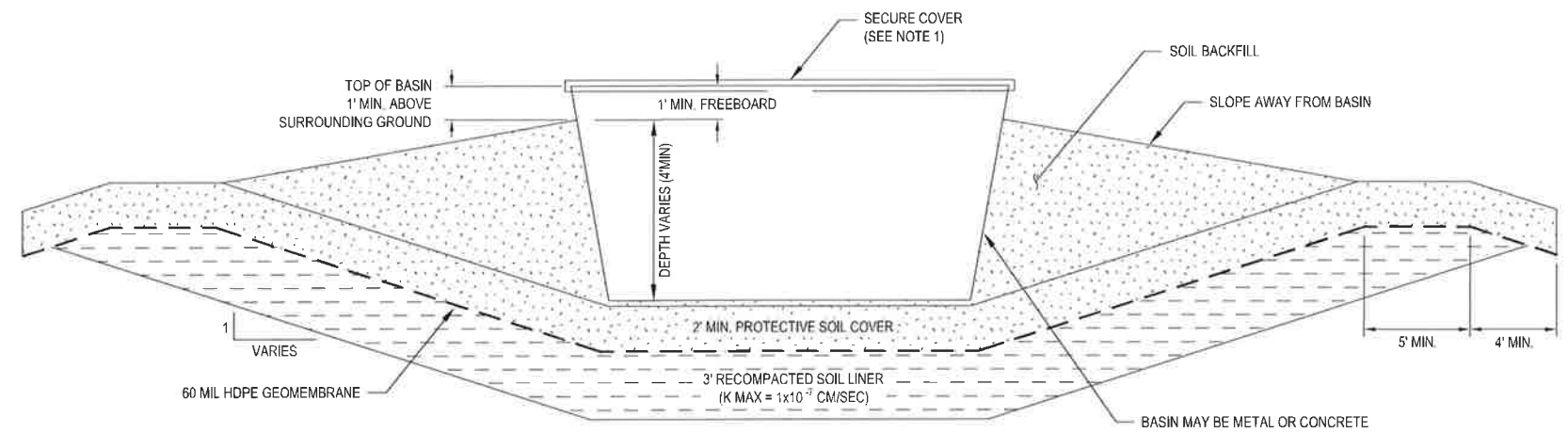
CONVENIENCE CENTER DETAILS

PROJ. NO.: 148866	DATE: APRIL 2015
DESIGNED BY: -	DRAWING NO. III B.1-4
DRAWN BY: MTE	
CHECKED BY: RDS	
APPROVED BY: MWO	4 OF 6 SHEETS



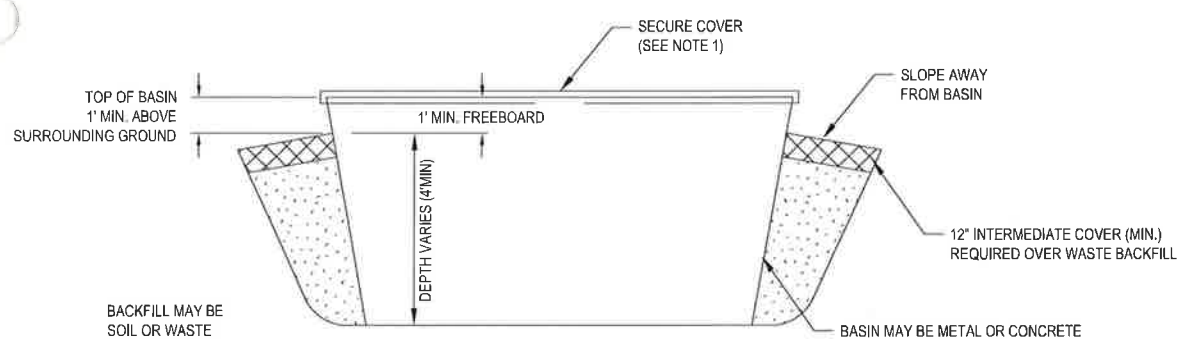
1
B.1-5
TEMPORARY LIQUID SOLIDIFICATION BASIN PLAN VIEW
NOT TO SCALE

- NOTE:**
1. STORMWATER TO BE DIRECTED AWAY FROM BASIN
 2. THIS PLAN IS CONCEPTUAL. ACTUAL DIMENSIONS OF THE BASIN WILL VARY.



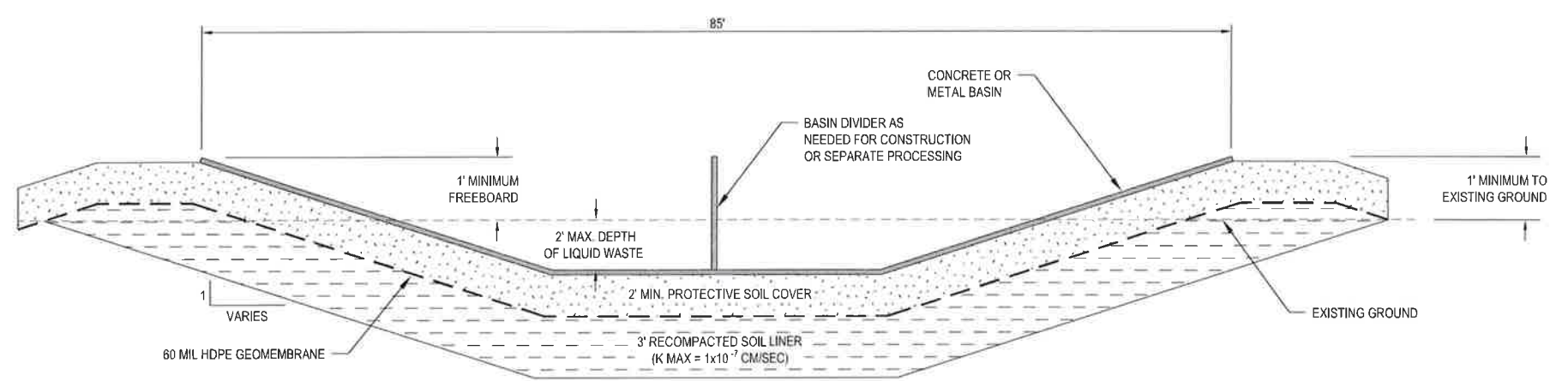
3
B.1-5
TYPICAL CROSS SECTION TEMPORARY BASIN LOCATED OUTSIDE OF WASTE CELL
NOT TO SCALE

- NOTE:**
1. A SECURE COVER WILL BE PLACED OVER THE TEMPORARY CONTAINER ANY TIME PROCESSED OR UNPROCESSED WASTE REMAINS IN THE CONTAINER OVERNIGHT
 2. THIS SECTION IS CONCEPTUAL. ACTUAL DIMENSIONS OF THE BASIN WILL VARY. THE BASIN SHALL BE AT A MINIMUM: 8 FEET WIDE, 20 FEET LONG, AND 5 FEET DEEP (4 FEET PLUS 1 FOOT FREEBOARD). THE NUMBER OF BASINS WILL VARY DEPENDING ON WASTE RECEIPTS.
 3. 2' OR 3' RECOMPACTED SOIL LINER AND 60 MIL HDPE GEOCOMPOSITE LINER AND 2' SOIL PROTECTIVE COVER TO BE CONSTRUCTED IN ACCORDANCE WITH APPENDIX III-D.7 (LINER QUALITY CONTROL PLAN)
 4. THIS BASIN CONFIGURATION AND CONSTRUCTION WILL BE UTILIZED OUTSIDE OF EXISTING WASTE BUT WITHIN PERMIT BOUNDARY.
 5. MULTIPLE UNITS MAY BE USED DEPENDING ON AMOUNT OF INCOMING WASTE.
 6. UNITS WILL ONLY BE CONSTRUCTED AS NEED DICTATES.



2
B.1-5
TYPICAL CROSS SECTION TEMPORARY BASIN LOCATED OVER LINED CELL
NOT TO SCALE

- NOTE:**
1. A SECURE COVER WILL BE PLACED OVER THE TEMPORARY CONTAINER ANY TIME PROCESSED OR UNPROCESSED WASTE REMAINS IN THE CONTAINER OVERNIGHT
 2. THIS SECTION IS CONCEPTUAL. ACTUAL DIMENSIONS OF THE BASIN WILL VARY. THE NUMBER OF BASINS WILL VARY DEPENDING ON WASTE RECEIPTS.
 3. THIS BASIN CONFIGURATION MAY ONLY BE PLACED IN EXISTING WASTE OVER THE EXISTING COMPOSITE LINED CELLS



4
B.1-5
TYPICAL CROSS SECTION PERMANENT LIQUID SOLIDIFICATION BASIN
NOT TO SCALE

- NOTE:**
1. PERMANENT BASIN MAY BE CONSTRUCTED IN PHASES AS WASTE RECEIPTS DICTATE.

REV. NO.	DATE	DESCRIPTION
1	9/2015	NDD 1

CBI CB&I Environmental & Infrastructure, Inc.
TBPE FIRM F-5650

CB&I Environmental and Infrastructure, Inc. has prepared this document for a specific project or purpose. All information contained within this document is copyrighted and remains intellectual property of CB&I Environmental and Infrastructure, Inc. This document may not be used or copied, in part or in whole, for any reason without express written consent by CB&I Environmental and Infrastructure, Inc.

Michael W. Oden

STATE OF TEXAS
MICHAEL W. ODEN
67165
REGISTERED PROFESSIONAL ENGINEER

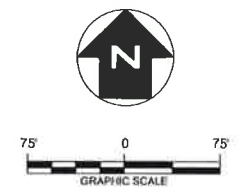
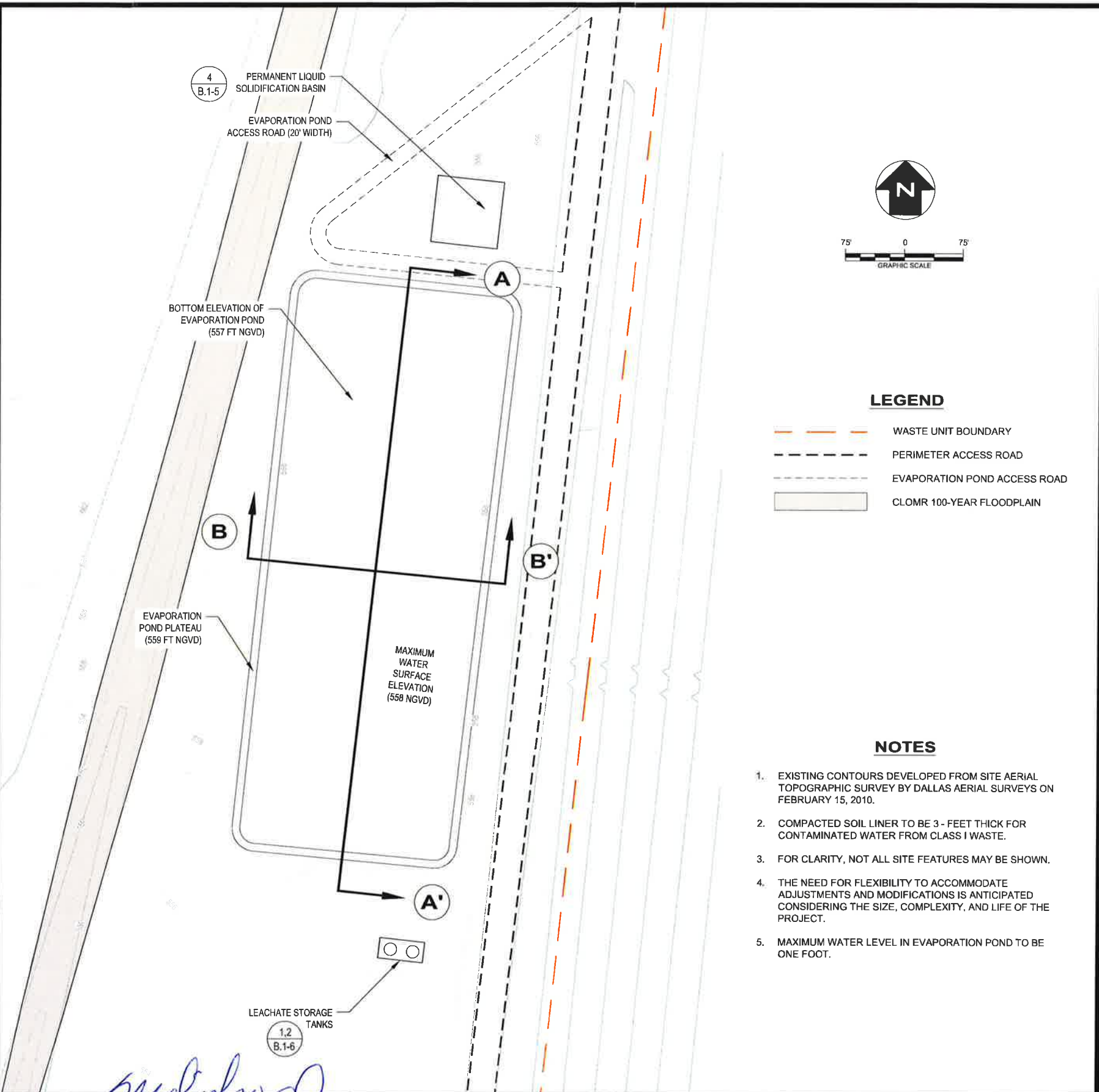
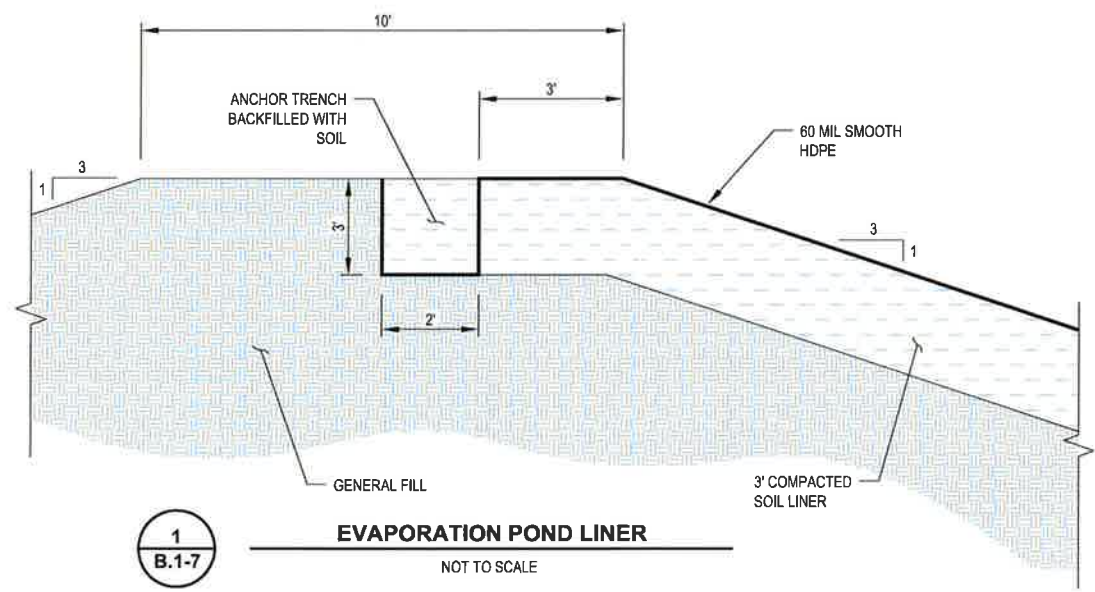
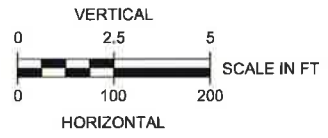
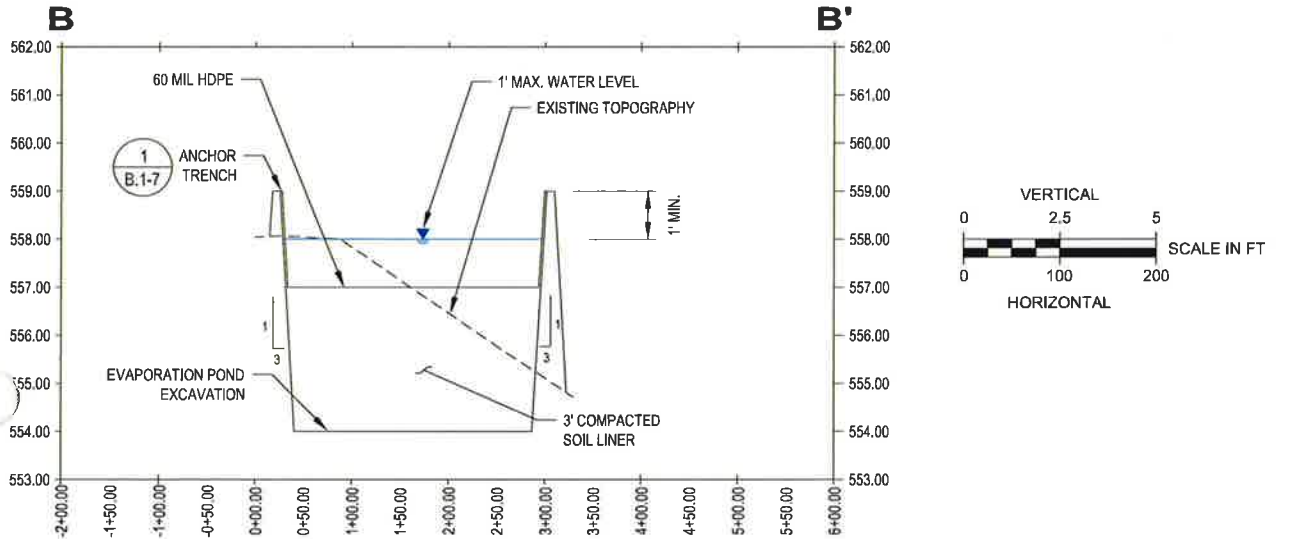
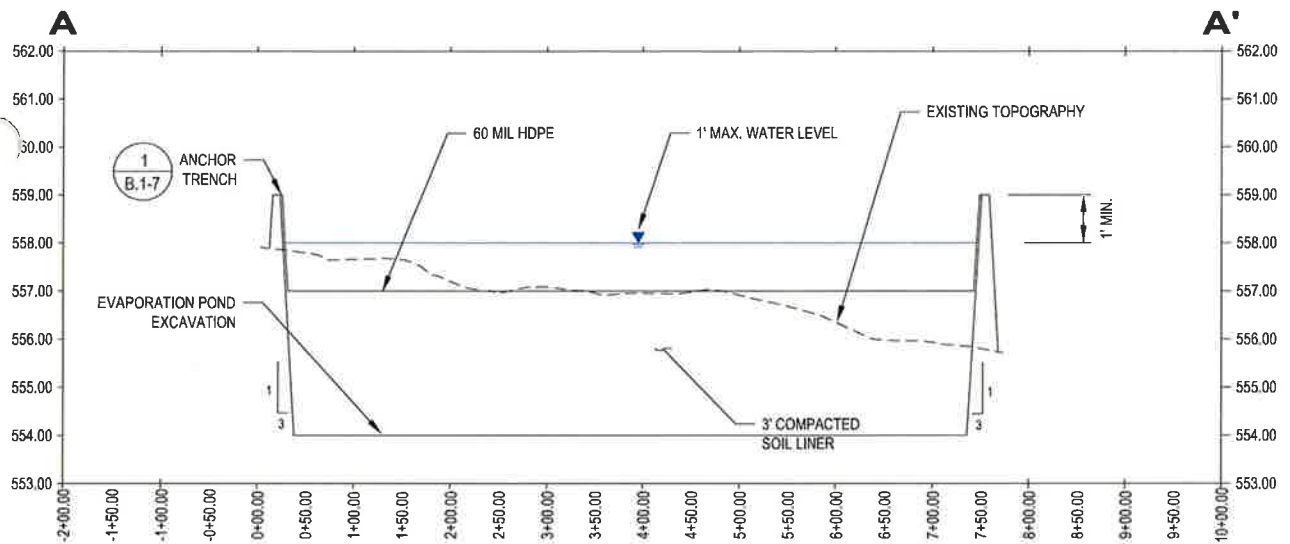
THIS DOCUMENT IS RELEASED FOR THE PURPOSE OF PERMITTING UNDER THE AUTHORITY OF MICHAEL W. ODEN, P.E. 67165.

9-18-2015

**PESCADITO ENVIRONMENTAL RESOURCE CENTER
WEBB COUNTY, TEXAS
MSW 2374**

LIQUID SOLIDIFICATION BASIN PLAN AND DETAILS

PROJ. NO.: 148866	DATE: APRIL 2015
DESIGNED BY:	DRAWING NO. III B.1-5
DRAWN BY: MTE	5 OF 6 SHEETS
CHECKED BY: RDS	
APPROVED BY: MWO	



- LEGEND**
- WASTE UNIT BOUNDARY
 - PERIMETER ACCESS ROAD
 - EVAPORATION POND ACCESS ROAD
 - CLOMR 100-YEAR FLOODPLAIN

- NOTES**
1. EXISTING CONTOURS DEVELOPED FROM SITE AERIAL TOPOGRAPHIC SURVEY BY DALLAS AERIAL SURVEYS ON FEBRUARY 15, 2010.
 2. COMPACTED SOIL LINER TO BE 3 - FEET THICK FOR CONTAMINATED WATER FROM CLASS I WASTE.
 3. FOR CLARITY, NOT ALL SITE FEATURES MAY BE SHOWN.
 4. THE NEED FOR FLEXIBILITY TO ACCOMMODATE ADJUSTMENTS AND MODIFICATIONS IS ANTICIPATED CONSIDERING THE SIZE, COMPLEXITY, AND LIFE OF THE PROJECT.
 5. MAXIMUM WATER LEVEL IN EVAPORATION POND TO BE ONE FOOT.

REV. NO.	DATE	DESCRIPTION
1	9/2015	NOD 1

CBI CB&I Environmental & Infrastructure, Inc.
 TBPE FIRM F-5650

THIS DOCUMENT IS RELEASED FOR THE PURPOSE OF PERMITTING UNDER THE AUTHORITY OF MICHAEL W. ODEN, P.E. 67165.

Michael W. Oden
 REGISTERED PROFESSIONAL ENGINEER
 7-18-2015

PESCADITO ENVIRONMENTAL RESOURCE CENTER
WEBB COUNTY, TEXAS
MSW 2374

EVAPORATION POND PLAN, PROFILES, AND DETAILS

PROJ. NO.:	148866	DATE:	APRIL 2015
DESIGNED BY:		DRAWING NO.	III
DRAWN BY:	MTE		B.1-7
CHECKED BY:	RDS		
APPROVED BY:	MWO		7 OF 7 SHEETS